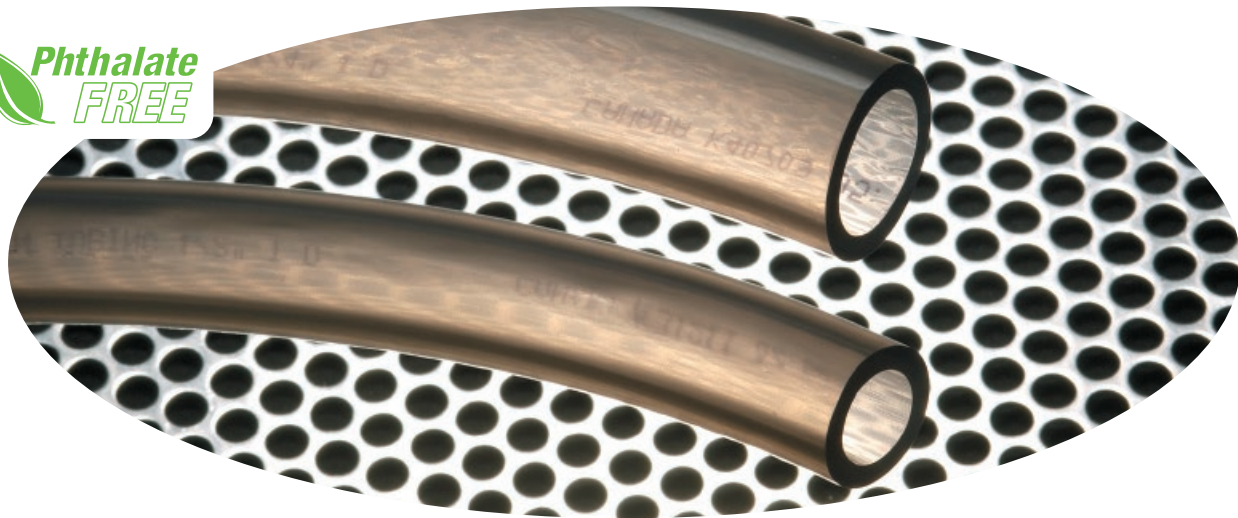


# Accuflex Beverage Transfer Products



## Sani-Clean AM™ 218 Series Drain Tubing — Added confidence in drain hygiene

**Construction:** Special proprietary compound incorporating an EPA-listed anti-microbial additive which discourages the development of fungal growth on the inner and outer tubing surfaces. The tubing's unique translucent metallic gray color gives it a sanitary appearance, while still allowing a visual inspection of the line while in service. Phthalate Free.

### Nominal Specifications

Part Number	Standard Package	Nominal		Working Pressure (psi)		Weight		Min. Bend Radius (in)	Clamp Size (mm)
		ID (in)	OD (in)	70°F	122°F	(lbs)	(kgs)		
218-0812	100' Payout Carton	1/2	3/4	45	12	13.4	6.1	6.0	19.8
218-1014	100' Boxed Coil	5/8	7/8	40	10	16.1	7.3	8.0	22.6
218-1216	100' Boxed Coil	3/4	1	39	8	18.8	8.5	9.0	27.1
218-1418	100' Boxed Coil	7/8	1 1/8	30	6	21.4	9.7	10.5	28.6
218-1620	100' Wrapped Coil	1	1 1/4	25	5	24.1	11.0	12.0	33.1

### Anti-microbial drain line tubing inhibits growth of

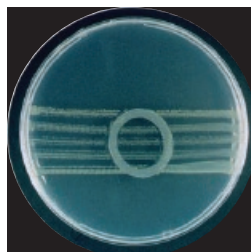
- Gram positive bacteria
- Gram negative bacteria
- Fungi, mold and yeast

### Drain lines for

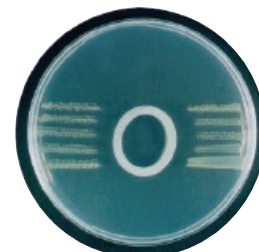
- Ice machines
- Dispensing equipment
- Condensate drains
- Wherever protection from microorganisms is needed!!!

### Demonstration of the Effectiveness of Sani-Clean AM™ Tubing

The photos below illustrate the effectiveness of the antimicrobial ingredients present in **Sani-Clean AM™** tubing. Using test AATCC Method 147-1998, a small cross-section each of regular PVC drain tubing and **Sani-Clean AM™** tubing were placed on agar in petri dishes, after bacteria had been deposited in stripes over the agar. Traces of the antimicrobial in parts per million diffuse into the agar creating the clear growth-free zone around the tubing. The area of the growth-free zone illustrates the effectiveness of the antimicrobial.



Regular PVC Drain Tubing



Sani-Clean AM™

Because we continually examine ways to improve our products, we reserve the right to alter specifications without notice.