



## Ideally suited for Layflat hoses

### General Applications:

- Agriculture • Chemicals • Petroleum
- Construction • Material handling

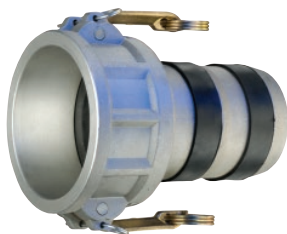
### Construction:

- Aluminum; ASTM B85 Grade 383.

### Features and Advantages:

- **Rubber seals** – Help prevent leakage.
- **Interchangeability** – Part C & E conform to Mil Spec A-A-59326.
- **Versatile** – Suitable for use with other PVC and Rubber Hoses.

**Note:** To insure proper sealing attach band clamps directly over rubber seals.



**Aluminum Part C Female Coupler x Hose Shank**

Part Number	Size (in)	Weight Each (lbs)	Standard Carton
AL-CLF150	1 1/2	0.77	30
AL-CLF200	2	0.98	40
AL-CLF300	3	1.98	15
AL-CLF400	4	2.87	15
AL-CLF600	6	5.65	6



**Aluminum Part E Male Adapter x Hose Shank**

Part Number	Size (in)	Weight Each (lbs)	Standard Carton
AL-ELF150	1 1/2	0.44	40
AL-ELF200	2	0.64	50
AL-ELF300	3	1.38	18
AL-ELF400	4	2.51	20
AL-ELF600	6	4.83	6



**Aluminum Pin Lug Hose Shank with Brass Swivel Nut Female End (NPSM Threads)**

Part Number	Size (in)	Weight Each (lbs)	Standard Carton
ABF-LF150	1 1/2	0.37	150
ABF-LF200	2	0.58	80
ABF-LF300	3	1.16	24
ABF-LF400	4	2.01	20



**Aluminum Pin Lug Hose Shank Male End (NPSM Threads)**

Part Number	Size (in)	Weight Each (lbs)	Standard Carton
ABM-LF150	1 1/2	0.22	150
ABM-LF200	2	0.40	80
ABM-LF300	3	1.04	24
ABM-LF400	4	1.48	20

Because we continually examine ways to improve our products, we reserve the right to alter specifications or discontinue products without prior notice.