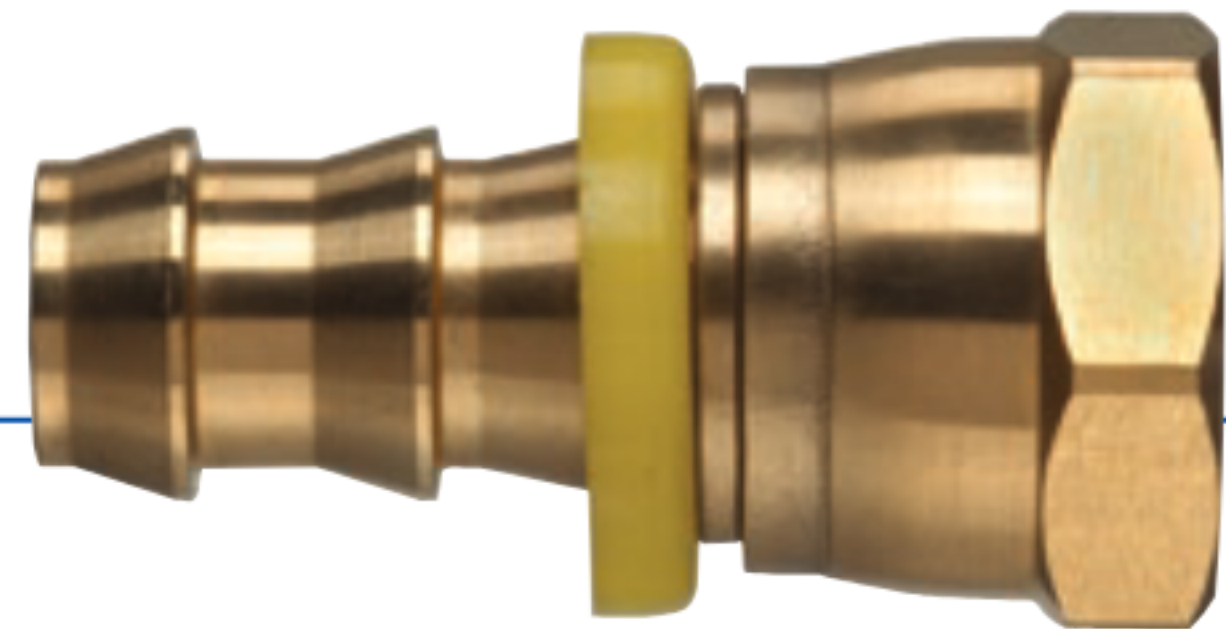




POFMPS



POFFPS

Push-On Fittings

POFMPS Series

Male Pipe Swivel x Push-On Barb

POFFPS Series

Female Pipe Swivel x Push-On Barb

VIEW ONLINE



SCAN FOR INFO

or visit

[KOA.link/
POFMPS-POFFPS](http://KOA.link/POFMPS-POFFPS)

FEATURES AND ADVANTAGES

- Couplings designed specifically for use with push-on type hoses.
- Push-On fittings will lock on the hose without the use of clamps or ferrules.
- Applications include low-pressure air, fuel, water, oil, and lubrication lines.

MATERIAL SPECIFICATIONS

- Brass – ASTM B124, Grade C37700.

Part Number	Size (in)	Thread Type	Thread (in-TPI)	PSI Rating at 70°F	Weight Each (lbs)	Standard Carton
POFMPS-0404	1/4	NPTF	1/4 - 18	150	0.062	50
POFMPS-0606	3/8	NPTF	3/8 - 18	150	0.090	25
POFMPS-0808	1/2	NPTF	1/2 - 14	150	0.143	25
POFMPS-1212	3/4	NPTF	3/4 - 14	150	0.249	25

Part Number	Size (in)	Thread Type	Thread (in-TPI)	PSI Rating at 70°F	Weight Each (lbs)	Standard Carton
POFFPS-0404	1/4	NPTF	1/4 - 18	150	0.060	50
POFFPS-0606	3/8	NPTF	3/8 - 18	150	0.093	50
POFFPS-0808	1/2	NPTF	1/2 - 14	150	0.117	50
POFFPS-1212	3/4	NPTF	3/4 - 14	150	0.214	25

Because we continually examine ways to improve our products, we reserve the right to alter specifications or discontinue products without prior notice.