

CRF-CS Series (Plated Steel) Crimp Ferrules

VIEW ONLINE



SCAN FOR INFO

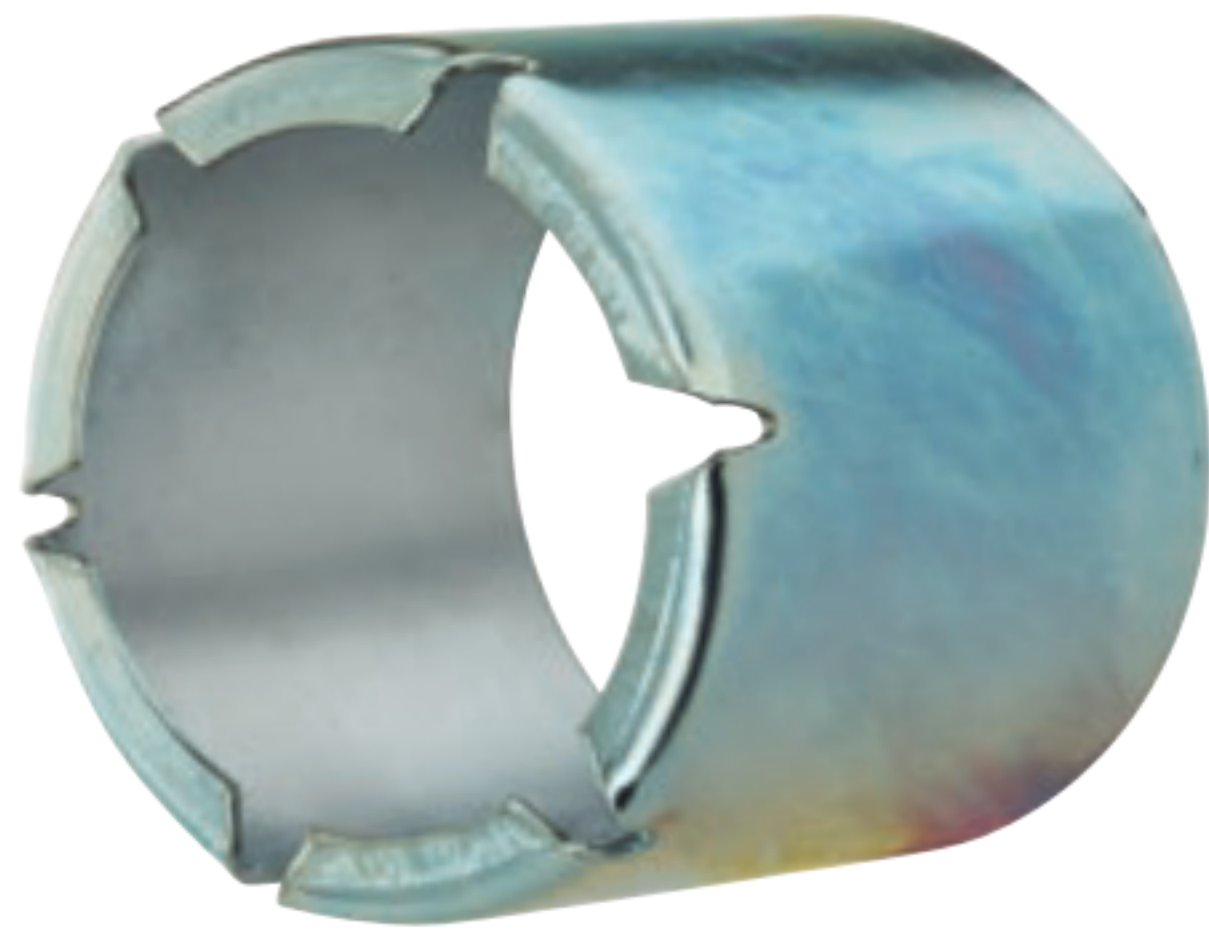
or visit

KOA.link/CRF-CS

| Part Number | Hose ID | Ferrule ID | | Wall Thickness | | Length | | Weight Each (lbs) | Standard Carton |
|-------------|---------|------------|------|----------------|------|--------|-------|-------------------|-----------------|
| | (in) | (in) | (mm) | (in) | (mm) | (in) | (mm) | | |
| CRF-CS08105 | 3/4 | 1.31 | 33.3 | 0.059 | 1.5 | 2.14 | 54.4 | 0.15 | 200 |
| CRF-CS08106 | 3/4 | 1.38 | 35.0 | 0.059 | 1.5 | 2.14 | 54.4 | 0.16 | 200 |
| CRF-CS08107 | 3/4 | 1.44 | 36.6 | 0.059 | 1.5 | 2.14 | 54.4 | 0.17 | 200 |
| CRF-CS08108 | 3/4 | 1.50 | 38.1 | 0.059 | 1.5 | 2.14 | 54.4 | 0.18 | 200 |
| CRF-CS10108 | 1 | 1.50 | 38.1 | 0.059 | 1.5 | 2.29 | 58.2 | 0.19 | 200 |
| CRF-CS10109 | 1 | 1.56 | 39.6 | 0.059 | 1.5 | 2.29 | 58.2 | 0.20 | 200 |
| CRF-CS10110 | 1 | 1.63 | 41.4 | 0.059 | 1.5 | 2.29 | 58.2 | 0.21 | 200 |
| CRF-CS10111 | 1 | 1.69 | 42.9 | 0.059 | 1.5 | 2.29 | 58.2 | 0.22 | 200 |
| CRF-CS10112 | 1 | 1.75 | 44.5 | 0.059 | 1.5 | 2.29 | 58.2 | 0.23 | 200 |
| CRF-CS10113 | 1 | 1.81 | 46.0 | 0.059 | 1.5 | 2.29 | 58.2 | 0.24 | 200 |
| CRF-CS15200 | 1 1/2 | 2.00 | 50.8 | 0.059 | 1.5 | 2.36 | 60.0 | 0.25 | 128 |
| CRF-CS15202 | 1 1/2 | 2.12 | 53.8 | 0.059 | 1.5 | 2.36 | 60.0 | 0.26 | 128 |
| CRF-CS15204 | 1 1/2 | 2.25 | 57.2 | 0.059 | 1.5 | 2.36 | 60.0 | 0.27 | 80 |
| CRF-CS15206 | 1 1/2 | 2.39 | 60.7 | 0.059 | 1.5 | 2.36 | 60.0 | 0.28 | 80 |
| CRF-CS20208 | 2 | 2.50 | 63.5 | 0.059 | 1.5 | 2.36 | 60.0 | 0.35 | 80 |
| CRF-CS20209 | 2 | 2.56 | 65.0 | 0.059 | 1.5 | 2.79 | 70.9 | 0.37 | 80 |
| CRF-CS20210 | 2 | 2.62 | 66.5 | 0.059 | 1.5 | 2.79 | 70.9 | 0.40 | 80 |
| CRF-CS20211 | 2 | 2.68 | 68.1 | 0.059 | 1.5 | 2.79 | 70.9 | 0.40 | 80 |
| CRF-CS20213 | 2 | 2.81 | 71.4 | 0.059 | 1.5 | 2.79 | 70.9 | 0.42 | 80 |
| CRF-CS20215 | 2 | 2.94 | 74.7 | 0.059 | 1.5 | 2.79 | 70.9 | 0.44 | 80 |
| CRF-CS25302 | 2 1/2 | 3.12 | 71.4 | 0.059 | 1.5 | 3.11 | 79.0 | 0.52 | 60 |
| CRF-CS25304 | 2 1/2 | 3.25 | 82.6 | 0.059 | 1.5 | 3.11 | 79.0 | 0.54 | 60 |
| CRF-CS25306 | 2 1/2 | 3.39 | 86.1 | 0.059 | 1.5 | 3.11 | 79.0 | 0.56 | 60 |
| CRF-CS25308 | 2 1/2 | 3.50 | 88.9 | 0.059 | 1.5 | 3.11 | 79.0 | 0.58 | 60 |
| CRF-CS30309 | 3 | 3.56 | 86.1 | 0.091 | 2.3 | 3.94 | 100.1 | 1.17 | 40 |

(CONTINUED)

Because we continually examine ways to improve our products, we reserve the right to alter specifications or discontinue products without prior notice.



CRF-CS Series (Plated Steel)

Crimp Ferrules

VIEW ONLINE



SCAN FOR INFO

or visit

KOA.link/CRF-CS

(CONTINUED FROM PAGE 181)

| Part Number | Hose ID | | Ferrule ID | | Wall Thickness | | Length | | Weight Each (lbs) | Standard Carton |
|-------------|---------|------|------------|-------|----------------|------|--------|------|-------------------|-----------------|
| | (in) | (in) | (mm) | (in) | (mm) | (in) | (mm) | | | |
| CRF-CS30310 | 3 | 3.62 | 88.9 | 0.091 | 2.3 | 3.94 | 100.1 | 1.19 | 40 | |
| CRF-CS30311 | 3 | 3.69 | 93.5 | 0.091 | 2.3 | 3.94 | 100.1 | 1.20 | 40 | |
| CRF-CS30312 | 3 | 3.75 | 95.3 | 0.091 | 2.3 | 3.94 | 100.1 | 1.21 | 40 | |
| CRF-CS30313 | 3 | 3.81 | 96.8 | 0.091 | 2.3 | 3.94 | 100.1 | 1.23 | 40 | |
| CRF-CS30315 | 3 | 3.94 | 100.1 | 0.091 | 2.3 | 3.94 | 100.1 | 1.25 | 40 | |
| CRF-CS30400 | 3 | 4.00 | 101.6 | 0.091 | 2.3 | 3.94 | 100.1 | 1.30 | 40 | |
| CRF-CS30404 | 3 | 4.25 | 108.0 | 0.091 | 2.3 | 3.94 | 100.1 | 1.35 | 40 | |
| CRF-CS40409 | 4 | 4.56 | 115.8 | 0.091 | 2.3 | 4.19 | 106.4 | 1.57 | 30 | |
| CRF-CS40410 | 4 | 4.63 | 117.6 | 0.091 | 2.3 | 4.19 | 106.4 | 1.59 | 30 | |
| CRF-CS40411 | 4 | 4.68 | 118.9 | 0.091 | 2.3 | 4.19 | 106.4 | 1.61 | 30 | |
| CRF-CS40412 | 4 | 4.75 | 120.7 | 0.091 | 2.3 | 4.19 | 106.4 | 1.63 | 30 | |
| CRF-CS40413 | 4 | 4.81 | 122.2 | 0.091 | 2.3 | 4.19 | 106.4 | 1.65 | 30 | |
| CRF-CS40414 | 4 | 4.88 | 124.0 | 0.091 | 2.3 | 4.19 | 106.4 | 1.67 | 30 | |
| CRF-CS40500 | 4 | 5.00 | 127.0 | 0.091 | 2.3 | 4.19 | 106.4 | 1.72 | 30 | |
| CRF-CS40501 | 4 | 5.06 | 128.5 | 0.091 | 2.3 | 4.19 | 106.4 | 1.74 | 30 | |
| CRF-CS60608 | 6 | 6.50 | 165.1 | 0.118 | 3.0 | 5.67 | 144.1 | 3.97 | 12 | |
| CRF-CS60610 | 6 | 6.63 | 168.4 | 0.118 | 3.0 | 5.67 | 144.1 | 4.02 | 12 | |
| CRF-CS60612 | 6 | 6.75 | 171.5 | 0.118 | 3.0 | 5.67 | 144.1 | 4.10 | 12 | |
| CRF-CS60614 | 6 | 6.88 | 174.8 | 0.118 | 3.0 | 5.67 | 144.1 | 4.17 | 12 | |
| CRF-CS60700 | 6 | 7.00 | 177.8 | 0.118 | 3.0 | 5.67 | 144.1 | 4.24 | 12 | |
| CRF-CS60702 | 6 | 7.13 | 181.1 | 0.118 | 3.0 | 5.67 | 144.1 | 4.31 | 12 | |
| CRF-CS60704 | 6 | 7.25 | 184.2 | 0.118 | 3.0 | 5.67 | 144.1 | 4.39 | 12 | |
| CRF-CS60706 | 6 | 7.38 | 187.5 | 0.118 | 3.0 | 5.67 | 144.1 | 4.47 | 12 | |

Because we continually examine ways to improve our products, we reserve the right to alter specifications or discontinue products without prior notice.