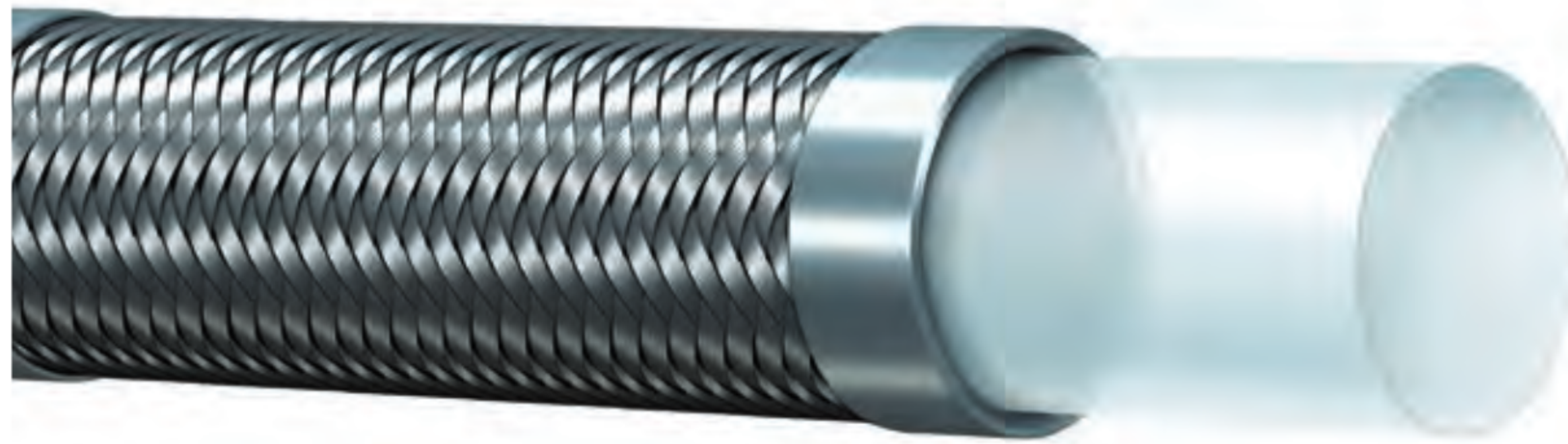


TR14TB - R14

PTFE/Stainless Braid



R14 PTFE True Bore Stainless Braid - TR14TB High Temp Hose



TR14TB - R14

High Tensile Stainless Steel Braid
 AISI 304
 FDA US Pharmacopeia - Class VI
 SAE 100R14

General Applications:

Compressed air, gas, steam, fuel, oil, chemical and pharmaceutical products, particularly suitable for steam piping on injection moulding machines, diathermic oil installations, charging lines for cryogenic gas, compressor discharge lines, automotive, pharmaceutical and food sectors. Solvents, pigments and paint transfer lines. Hydraulic lines in power steering marine applications. Not suitable for molten alkali metals and halogens at high temperature.

Construction:

Tube – Smooth PTFE - high mechanical and vibration resistance, low permeability, dielectrical, fire resistant, food grade (FDA, DVGW, BFR compliant). Chemically inert, non sticking, ozone and weather resistant.

Reinforcement – High tensile stainless steel braid AISI 304.

Service Temperature Range:

-76°F (-60°C) to +500°F (+260°C) constant operation.

Nominal Specifications

| Series Number | Size Code | ID | | OD | | Max Working [†] Pressure (psi) | Min. Bend. Radius | | Weight (lbs/ft) | Coupling Recommendations | |
|---------------|-----------|------|------|------|------|---|-------------------|-------|-----------------|--------------------------|-----------|
| | | (in) | (mm) | (in) | (mm) | | (in) | (mm) | | Two-Piece Ferrule | Non-Skive |
| TR14TB | 03 | 3/16 | 4.8 | 0.31 | 7.8 | 4000 | 2.0 | 50.8 | 0.06 | AFT | |
| TR14TB | 04 | 1/4 | 6.4 | 0.34 | 8.6 | 3500 | 3.0 | 76.2 | 0.06 | AFT | |
| TR14TB | 05 | 5/16 | 7.9 | 0.46 | 11.6 | 3000 | 4.0 | 101.6 | 0.09 | AFT | |
| TR14TB | 06 | 3/8 | 9.5 | 0.50 | 12.7 | 2600 | 5.0 | 127.0 | 0.10 | AFT | |
| TR14TB | 08 | 1/2 | 12.7 | 0.61 | 15.4 | 2300 | 5.5 | 139.7 | 0.13 | AFT | |
| TR14TB | 10 | 5/8 | 15.9 | 0.72 | 18.4 | 2000 | 6.5 | 165.1 | 0.18 | AFT | |
| TR14TB | 12 | 3/4 | 19.1 | 0.87 | 22.1 | 1600 | 8.0 | 203.2 | 0.22 | AFT | |
| TR14TB | 16 | 1 | 25.4 | 1.17 | 29.8 | 1000 | 12.0 | 304.8 | 0.35 | AFT | |

[†] Minimum burst pressure 4-to-1 safety factor.

Freight: Hydraulic Hose can be combined with other KOA products for qualifying prepaid freight orders.

Because we continually examine ways to improve our products, we reserve the right to alter specifications or discontinue products without prior notice.

HOSES
 ONE-PIECE B SERIES
 ONE-PIECE D SERIES
 ONE-PIECE F & P SERIES
 TWO-PIECE FERRULES (A & PFR SERIES)
 TWO-PIECE INSERTS (A SERIES)
 TWO-PIECE INTERLOCK FERRULES & INSERTS (X & Z SERIES)
 QUICK RELEASE
 ASSEMBLY EQUIPMENT

TECHNICAL INFORMATION