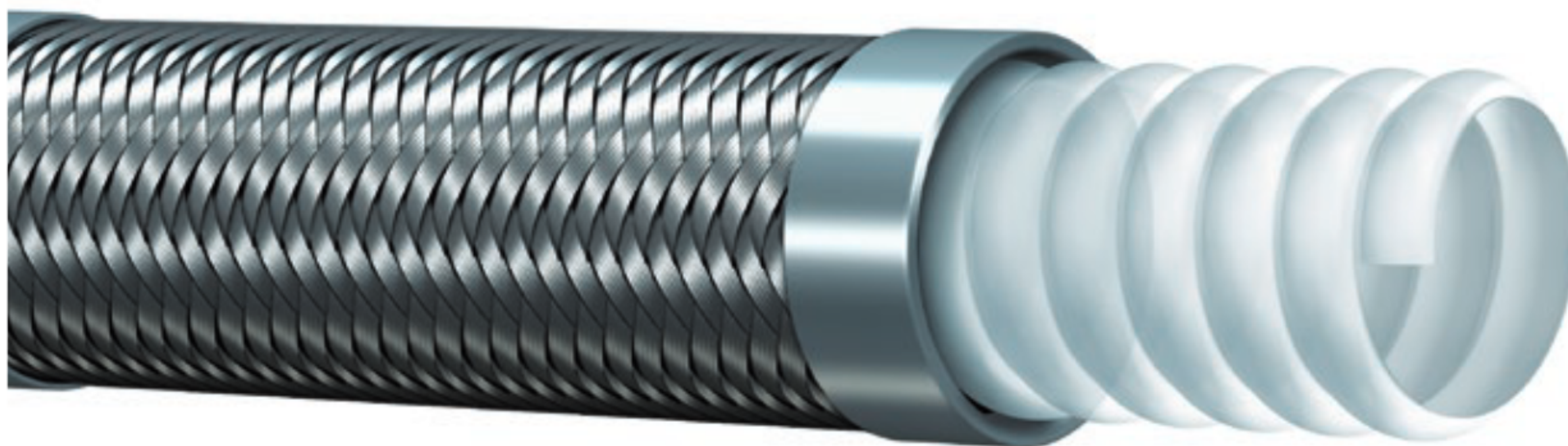


R14 Convoluted PTFE Stainless Steel braid – TR14C

High Temp Hose

NEW



TR14C - R14

Seamless Helical Convoluted PTFE
High Tensile Stainless Steel Braid
AISI 304
FDA US Pharmacopeia - Class VI
SAE 100R14

General Applications:

Compressed air, gas, steam, fuel, oil, chemical and pharmaceutical products, particularly suitable for steam piping on injection moulding machines, diathermic oil installations, charging lines for cryogenic gas, compressor discharge lines, automotive, pharmaceutical and food sectors. Solvents, pigments and paint transfer lines. Hydraulic lines in power steering marine applications. Not suitable for molten alkali metals and halogens at high temperature.

Construction:

Tube – Seamless Helical Convoluted PTFE - high mechanical and vibration resistance, low permeability, dielectrical, fire resistant, food grade (FDA, DVGW, BFR compliant). Chemically inert, non-sticking, ozone and weather resistant.
Reinforcement – High tensile stainless steel braid AISI 304.

Service Temperature Range:

-76°F (-60°C) to +500°F (+260°C) constant operation.

Nominal Specifications

Series Number	Size Code	ID		OD		Max Working† Pressure (psi)	Min. Bend. Radius		Weight (lbs/ft)	Coupling Recommendations	
		(in)	(mm)	(in)	(mm)		(in)	(mm)		Two-Piece Ferrule	Non-Skive
TR14C	06	3/8	9.5	0.62	14.7	2000	0.79	20	0.16	AFT	
TR14C	08	1/2	12.7	0.74	18.8	1500	0.98	25	0.19	AFT	
TR14C	10	5/8	15.9	0.87	22.1	1200	2.00	51	0.22	AFT	
TR14C	12	3/4	19.1	0.97	24.6	1000	2.52	64	0.27	AFT	
TR14C	16	1	25.4	1.29	32.8	670	3.50	89	0.37	AFT	
TR14C	20	1 1/4	31.8	1.60	40.7	525	5.00	127	0.46	AFT	
TR14C	24	1 1/2	38.1	1.90	48.2	450	5.98	152	0.60	AFT	
TR14C	32	2	50.8	2.42	61.5	345	7.87	200	0.84	AFT	

† Minimum burst pressure 4-to-1 safety factor.

Freight: Hydraulic Hose can be combined with other KOA products for qualifying prepaid freight orders.

Because we continually examine ways to improve our products, we reserve the right to alter specifications or discontinue products without prior notice.

- HOSES
- ONE-PIECE B SERIES
- ONE-PIECE D SERIES
- ONE-PIECE F & P SERIES
- TWO-PIECE FERRULES (A & PFR SERIES)
- TWO-PIECE INSERTS (A SERIES)
- TWO-PIECE INTERLOCK FERRULES & INSERTS (X & Z SERIES)
- QUICK RELEASE
- ASSEMBLY EQUIPMENT
- TECHNICAL INFORMATION