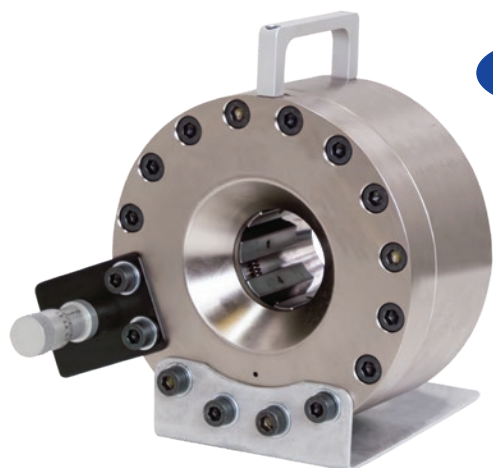


## KC1-H47L Series



**NEW**

### DESCRIPTION

With its compact design, built-in carrying handle, and weighing a mere 28 lbs., this crimper is one for the road, perfect for on-site service in remote spots. Its powered by either a separate hand, pneumatic or battery powered pump (sold separately).

View Up To Date Info



◀ SCAN OR VISIT  
[KOA.link/  
 KC1-H47L](https://koi.link/KC1-H47L)

### INCLUDED ACCESSORIES



Die Segment  
Change Tool  
KCDCT-H39



Carry Handle

### OPTIONAL ACCESSORIES (PGS. 41 – 48)



Battery Pump  
KC1-H47L-BPP



Hand Pump  
KC1-H47E-HP



Air Pump  
KC1-H47L-PAP



Case and Dies  
KC1-H47E-DIECASE

Hose Capacity (in)		Crimping Force (ton)
1 – 2 Wire	3/4	<b>57</b>
4 SP / 6 SP	NA	
90° Fittings	3/8	
Industrial	NA	

Opening Diameter	
Max. With Dies (mm / in)	<b>49 / 1.93</b>
By Die Size (mm / in)	Die Size + <b>20 / 0.79</b>

Crimper Size	
L x W x H (in)	10.0 x 10.9 x 18.9
Weight (lbs)	28

Part Number	Pump Info
KC1-H47L	Hand, Air or Battery

### CONTROL MECHANISM



Dial micrometer, with electric limit switch indicating when the crimp diameter is reached.

Die Series		Die Range (mm)		
H39		6 – 29		
Die Number	Crimp Range (mm)	Closed Diameter (mm)	Length (mm)	Weight (lbs/ea)
KCDH39-6	6.0 - 8.0	6	55	4.0
KCDH39-8	8.0 - 10.0	8	55	4.0
KCDH39-10	10.0 - 12.0	10	55	4.0
KCDH39-12	12.0 - 14.0	12	55	4.0
KCDH39-14	14.0 - 16.0	14	55	4.0
KCDH39-16	16.0 - 19.0	16	55	4.0
KCDH39-19	19.0 - 22.0	19	55	4.0
KCDH39-22	22.0 - 25.0	22	55	4.0
KCDH39-25	25.0 - 29.0	25	65	4.0
KCDH39-29	29.0 - 34.0	29	65	4.0

### BATTERY PUMP INFO

#### KC1-H47L-BPP

- One 14.4V battery (PN# BATT-H47E) included
- Charger included
- Compact and lightweight (only 18 lbs.)

### CASE AND DIES INFO

#### KC1-H47E-DIECASE

Case with eight dies (10, 12, 14, 16, 19, 22, 25 and 29 mm) available (sold separately)

Because we continually examine ways to improve our products, we reserve the right to alter specifications or discontinue products without prior notice.