

## KC3-H130 SERIES



### DESCRIPTION

The production oriented KC3-H130 takes a step up in size capabilities, with the ability to crimp 2" wire braid and 4 SP hydraulic hose, as well as 1 1/2" 5,000 PSI 6 SP hydraulic hose intermittently. Its back limit switch and ES3 computerized controller reduce crimp cycle times.

### INCLUDED ACCESSORIES

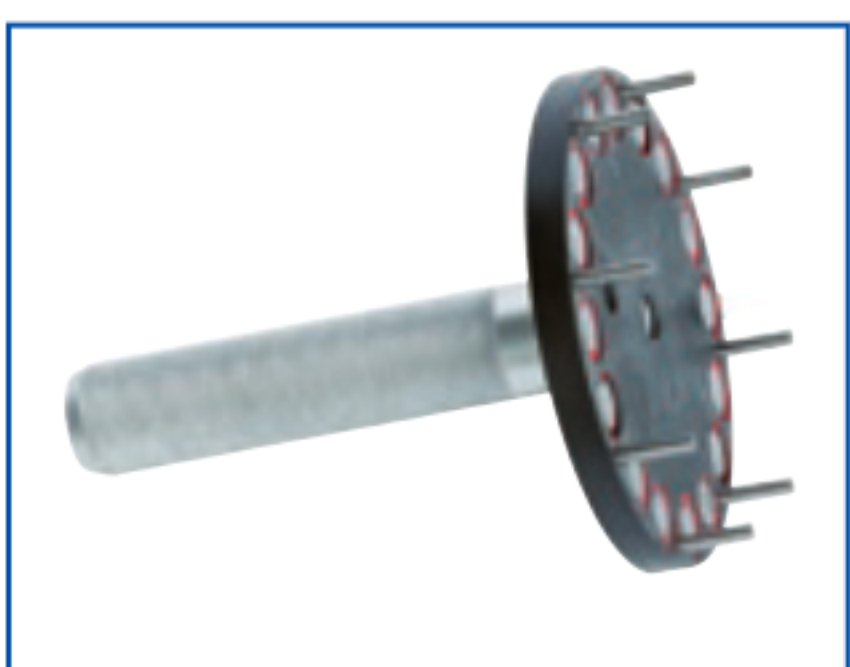


Back Limit Switch

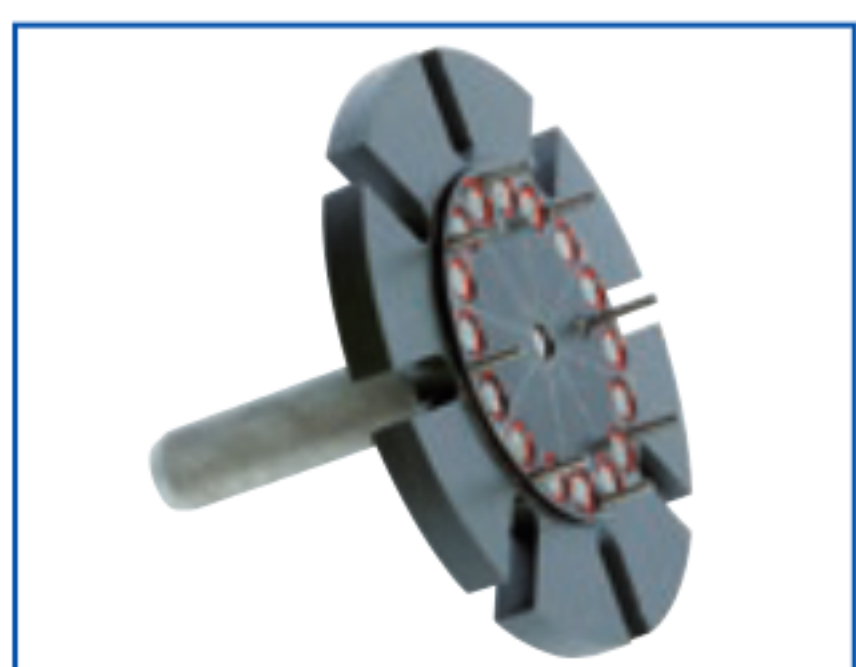


Crimp Calculator

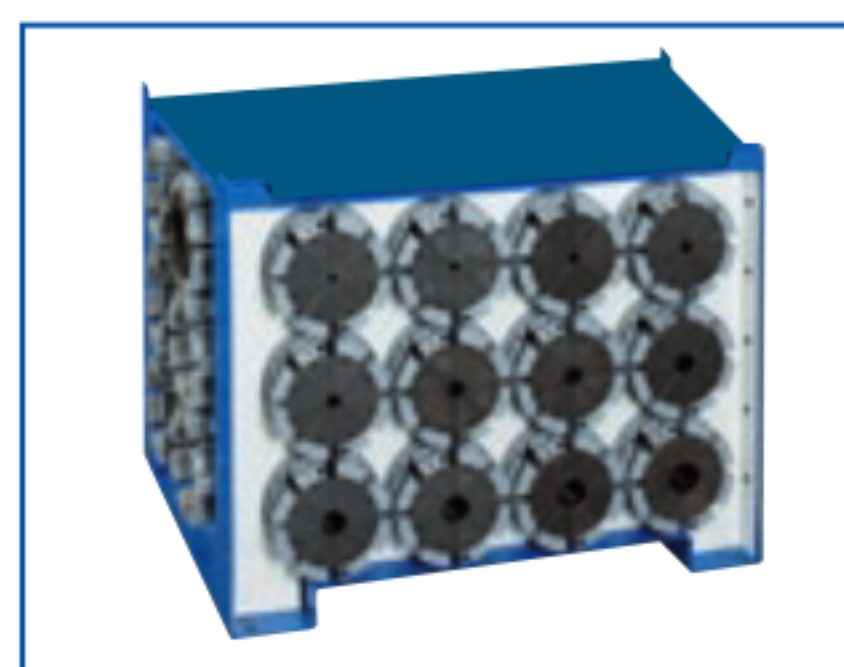
### OPTIONAL ACCESSORIES (PGS. 36 – 43)



Quick Change Die Tool  
KCQCT-H119



Patented Quick Change Die Tool  
KCPQCT-H130



Die Holder Base (18 pc.)  
DIEBASE-H119



Die Rack (8 pc.)  
DIERACK-H119



Electric Foot Pedal  
PEDAL-ES



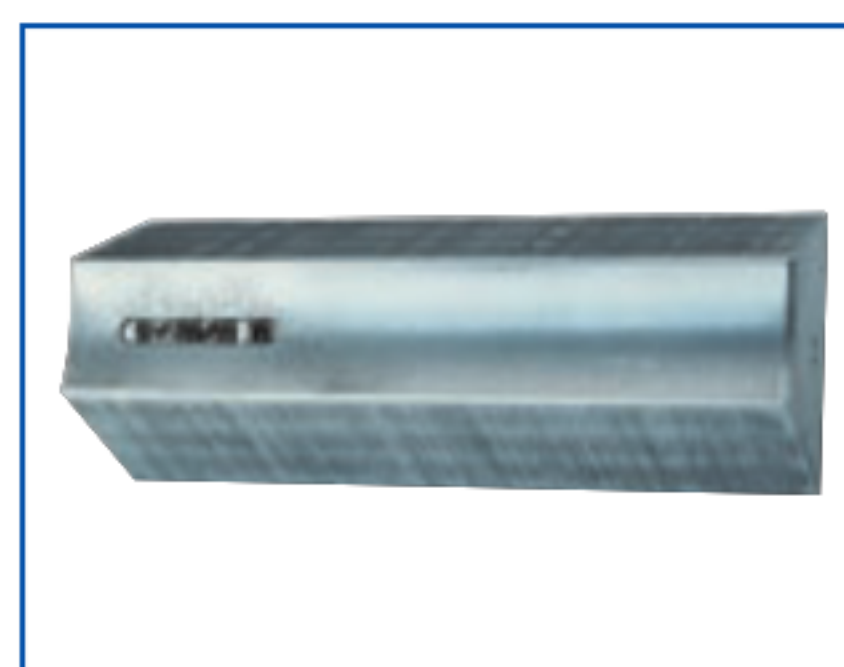
Cleaning and Lubrication Kit  
CALKIT-H130



ES3 Upgrades  
(pg. 37)



Custom Made Dies



Marking Dies  
(pgs. 21 & 22)

Hose Capacity (in)		Crimping Force (ton)
1 – 2 Wire	2	<b>210</b>
4 SP / 6 SP	2 / 1 1/2*	
90° Fittings	2	
Industrial	3	

\*1 1/2" limited to intermittent use with 5,000 PSI hose & 1-pc fittings

Opening Diameter	
Max. Without Dies (mm / in)	<b>154 / 6.06</b>
Max. With Dies (mm / in)	<b>108 / 4.25</b>
By Die Size (mm / in)	Die Size + <b>35 / 1.38</b>

Crimper Size	
L x W x H (in)	29.9 x 27.2 x 28.8
Weight (lbs)	650

Part Number	Motor Info
KC3-H130-230/1	5.5 HP (230 V) 1 PH
KC3-H130-230/3	5.5 HP (230 V) 3 PH

Die Series	Die Range (mm)
H119	6 – 96

**i** Refer to pg. 20 for available dies

### CONTROL MECHANISM



**ES3**

- Full-color, touch-screen display
- Stores up to 200 crimp specifications
- Built-in crimp diameter calculator
- Adjustable reopen diameter
- USB port option for data transfer

Because we continually examine ways to improve our products, we reserve the right to alter specifications or discontinue products without prior notice.