

KC3-H170 SERIES




Widest Opening

DESCRIPTION

The widest opening of all the Standard Volume Crimpers makes this crimper ideal for industrial hose. It makes an excellent hydraulic hose crimper as well, handling up to 2" wire braid and 4 SP hose, along with our 6 SP hoses up to 5000 PSI using F Series, 1-piece fittings. Reduction dies included.

INCLUDED ACCESSORIES

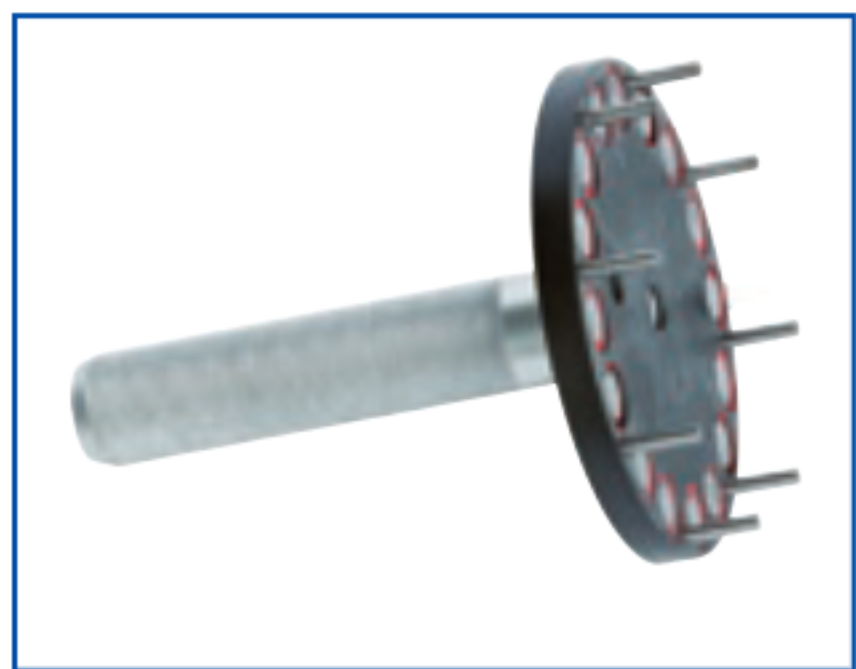


Back Limit Switch

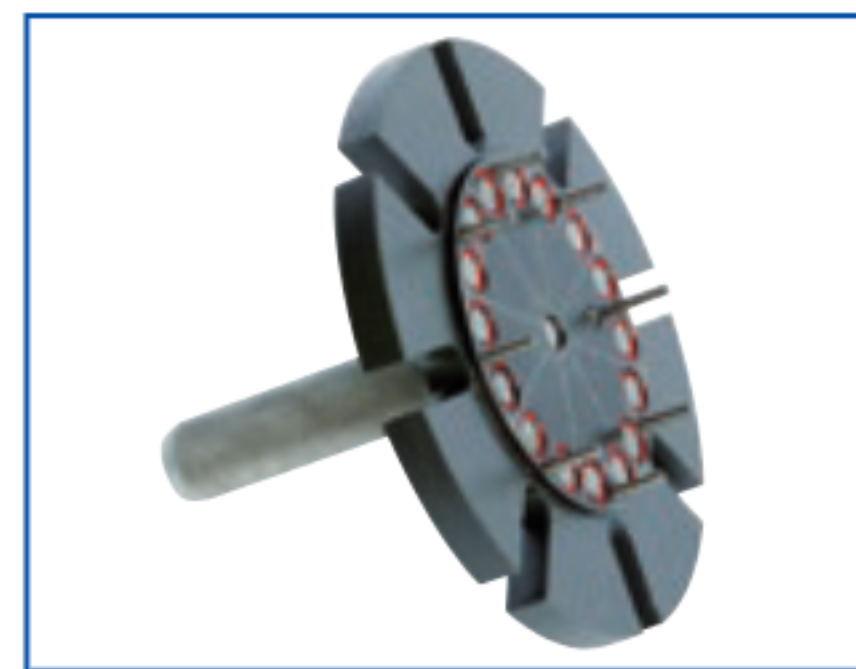


Crimp Calculator

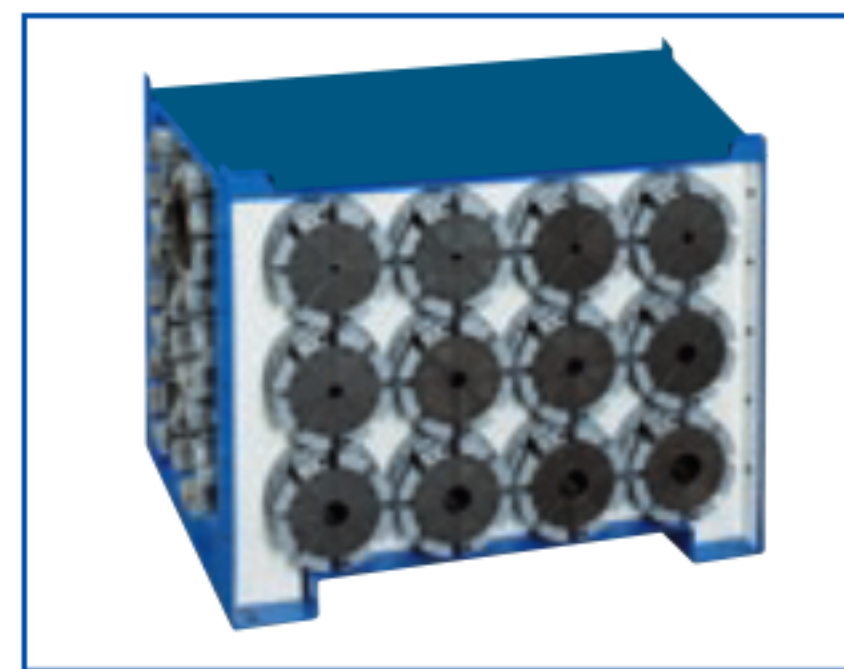
OPTIONAL ACCESSORIES (PGS. 36 – 42)



Quick Change Die Tool
KCQCT-H119



Patented Quick Change Die Tool
KCPQCT-H170



Die Holder Base (18 pc.)
DIEBASE-H119



Die Rack (8 pc.)
DIERACK-H119



Electric Foot Pedal
PEDAL-ES



ES3 Upgrades
(pg. 37)



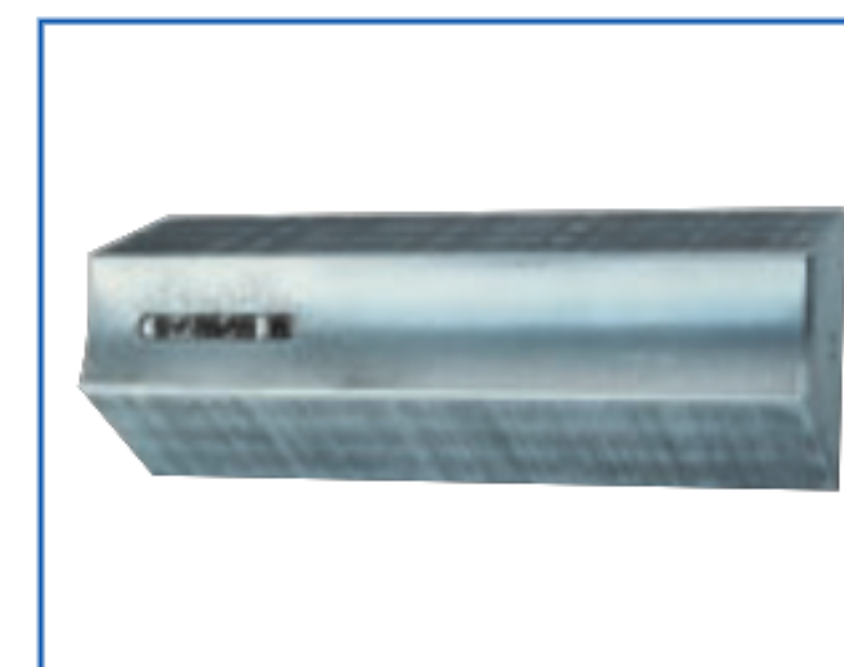
Back Mirror
MIRROR-H135/170



Cleaning and Lubrication Kit
CALKIT-H130



Custom Made Dies



Marking Dies
(pgs. 21 & 22)

Hose Capacity (in)		Crimping Force (ton)
1 – 2 Wire	2	308
4 SP / 6 SP	2 / 2*	
90° Fittings	2	
Industrial	4†	

*2" limited to 5,000 PSI hose using 1-pc fittings
 †Up to 5" depending on hose and coupling type

Opening Diameter	
Max. Without Dies (mm / in)	219 / 8.62
Max. With Dies (mm / in)	192 / 7.56
By Die Size (mm / in)	Die Size + 61 / 2.42

Crimper Size	
L x W x H (in)	32.3 x 25.9 x 33.0
Weight (lbs)	1,102

Part Number	Motor Info
KC3-H170-230/3	7 HP (230 V) 3 PH

Die Series	Die Range (mm)
H119 & H144	6 – 131 [^]

[^] Custom Dies available to 138 mm

i Refer to pg. 20 for available dies

CONTROL MECHANISM



ES3

- Full-color, touch-screen display
- Stores up to 200 crimp specifications
- Built-in crimp diameter calculator
- Adjustable reopen diameter
- USB port option for data transfer

Because we continually examine ways to improve our products, we reserve the right to alter specifications or discontinue products without prior notice.