

ES3 Programmable Electronic Controller

INCLUDED ON ALL KC3 SERIES CRIMPERS

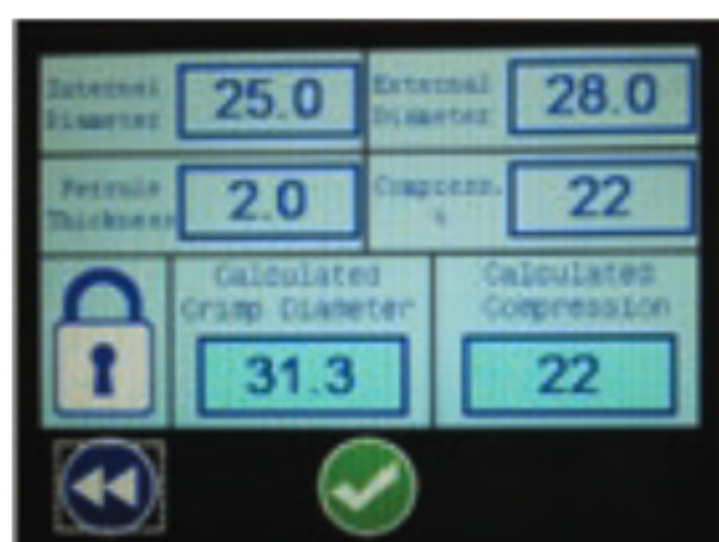
ES3 Programmable Logic Controller, with 5.7" wide, full-color, touch-screen display. Delivers the following crimp control options, in an easy to navigate format, improving crimp quality, safety, and reduced crimp cycle times.

Crimp Specification Memory - Stores up to 200 separate hose crimp specifications for immediate recall.

Crimp Diameter Calculator – Automatically calculates crimp diameter based on hose ID, OD, shank OD and ferrule thickness.

Multiple Crimp Cycles - Choose between manual, automatic and semi-automatic crimping modes, with the ability to toggle between modes during crimping.

Adjustable Reopen Diameter – Allows operator to set smaller reopen diameters, eliminating the need for the dies to fully reset in between crimps, reducing crimp cycle time when doing multiple crimps of the same type.



All ES3 models equipped with built-in crimp diameter calculator.

ES3 UPGRADE OPTIONS

USB Port Connection - Allows for easy uploading or downloading of crimp specifications in CSV format.

Multi-step Crimp Option - Executes up to 5 different crimp diameters in succession. Reduces cycle time in instances when crimping multiple hoses when more than one crimp diameter is required.

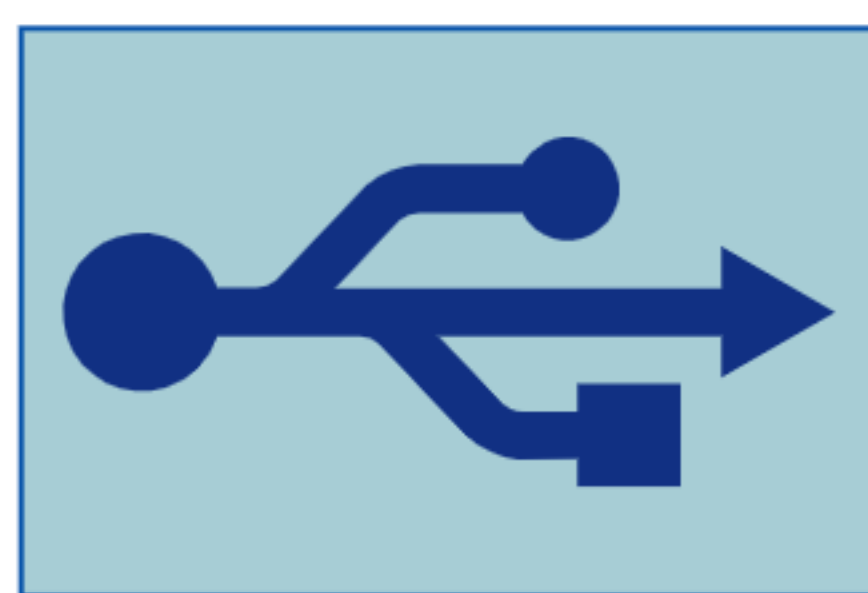
Quality Check Function - Compares actual recorded crimping pressure with pre-determined acceptable pressure range in order to help ensure crimp was performed properly and help catch anomalies.

Pressure Controlled Crimping - Allows for crimping according to force instead of diameter.

KC3 SERIES UPGRADE OPTIONS

Works with all KC3 Series models

USB PORT



PN# ES3-USB

MULTISTEP CRIMPING



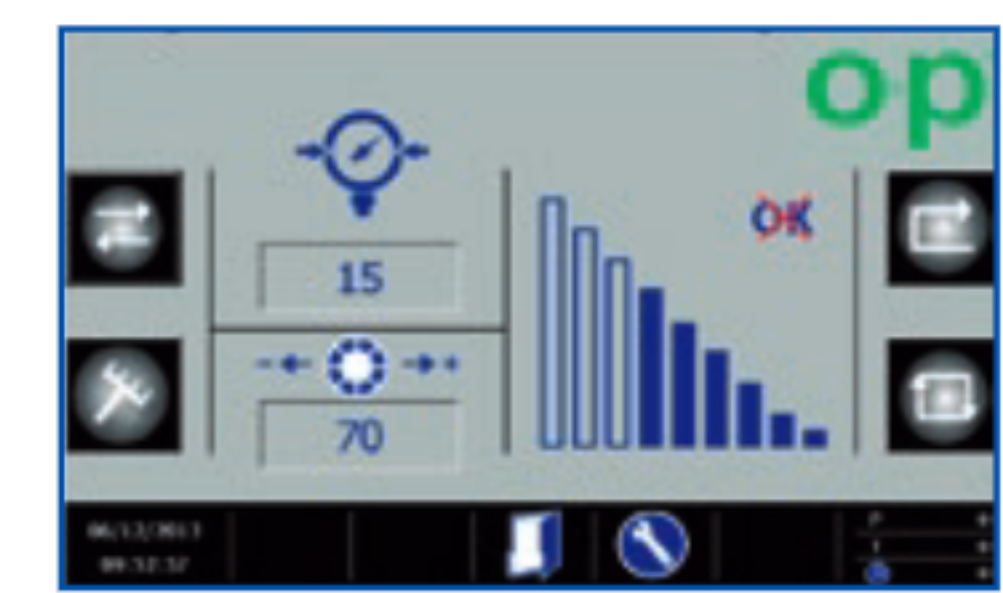
PN# ES3-MULTI

QUALITY CHECK



PN# ES3-QUAL

PRESSURE CONTROLLED CRIMPING



PN# ES3-PRESS

Because we continually examine ways to improve our products, we reserve the right to alter specifications or discontinue products without prior notice.