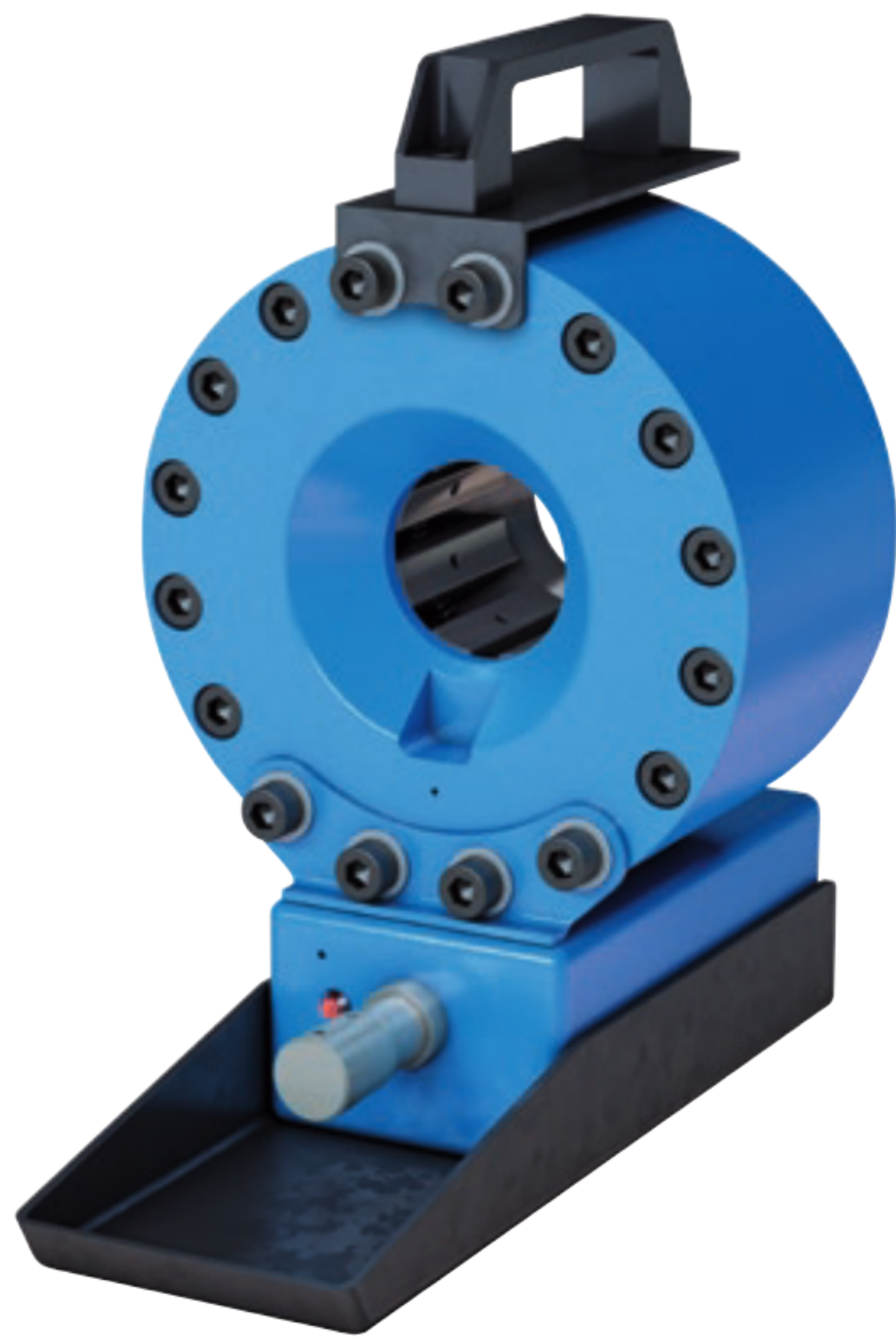


KC1-H47E Series



NEW



Case with eight dies (10, 12, 14, 16, 19, 22, 25 and 29 mm) available (sold separately)
 PN# KC1-H47E-DIECASE

DESCRIPTION

With its compact design, built-in carrying handle, and weighing a mere 52 lbs., this crimper is one for the road, perfect for on-site service in remote spots. It's powered by either a separate hand, pneumatic or battery powered pump (sold separately).

INCLUDED ACCESSORIES



Die Change Tool
 KCDCT-H39



Carry Handle

OPTIONAL ACCESSORIES (PGS. 36 – 43)



NEW

Battery Pump
 KC1-H47E-BPP



Hand Pump
 KC1-H47E-HP



Air Pump
 KC1-H47E-PAP



Support Frame
 KC1-H47E-BASE



NEW

Case and Dies
 KC1-H47E-DIECASE

Hose Capacity (in)		Crimping Force (ton)
1 – 2 Wire	1	110
4 SP / 6 SP	NA	
90° Fittings	3/8	
Industrial	NA	
Opening Diameter		
Max. With Dies (mm / in)		49 / 1.93
By Die Size (mm / in)		Die Size + 20 / 0.79
Crimper Size		
L x W x H (in)		7.87 x 12.36 x 12.60
Weight (lbs)		52
Part Number		Pump Info
KC1-H47E		Hand, Air or Battery

CONTROL MECHANISM



Dial micrometer, with electric limit switch indicating when the crimp diameter is reached.

Die Series	Die Range (mm)			
H39	6 – 29			
Die Number	Crimp Range (mm)	Closed Diameter (mm)	Length (mm)	Weight (lbs/ea)
KCDH39-6	6.0 - 8.0	6	55	4.0
KCDH39-8	8.0 - 10.0	8	55	4.0
KCDH39-10	10.0 - 12.0	10	55	4.0
KCDH39-12	12.0 - 14.0	12	55	4.0
KCDH39-14	14.0 - 16.0	14	55	4.0
KCDH39-16	16.0 - 19.0	16	55	4.0
KCDH39-19	19.0 - 22.0	19	55	4.0
KCDH39-22	22.0 - 25.0	22	55	4.0
KCDH39-25	25.0 - 29.0	25	65	4.0
KCDH39-29	29.0 - 34.0	29	65	4.0

BATTERY PUMP INFO KC1-H47E-BPP

- One 14.4V battery (PN# BATT-H47E) included
- Charger included
- Compact and lightweight (only 18 lbs.)

NEW



(sold separately)

Because we continually examine ways to improve our products, we reserve the right to alter specifications or discontinue products without prior notice.