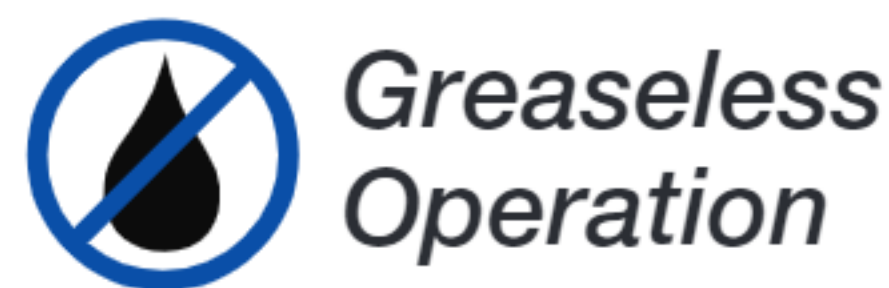


## KC4-V300 SERIES



Hose Capacity (in)		Crimping Force (ton)
1 – 2 Wire	3	<b>725</b>
4 SP / 6 SP	3	
90° Fittings	3	
Industrial	12	

Opening Diameter	
Max. Without Dies (mm / in)	<b>475 / 18.70</b>
Max. With Dies (mm / in)	<b>345 / 13.58</b>
By Die Size (mm)	Die Size + <b>155</b>

Crimper Size	
L x W x H (in)	47.2 x 37.4 x 81.9
Weight (lbs)	10,868

Part Number	Motor Info
KC4-V300-230/3	10 HP (230 V) 3 PH

Die Series	Die Range (mm)
V119 & V220	6† – 190*

\* Large Diameter Dies available up to 350 mm  
 † Reduction dies sold separately

### CONTROL MECHANISM



**ES4**

- Large, full-color, touch-screen display
- Stores up to 1,000 crimp specifications
- Built-in crimp diameter calculator
- USB port connection
- Optional upgrades such as digital caliper, history data save, barcode reader, webcam and WiFi connection

### DESCRIPTION

Handles industrial hose up to 12" and features an enlarged opening mechanism that allows for assemblies with large couplings or flanges. Its back limit switch and advanced Siemens ES4 computerized controller greatly reduce cycle times. Its power pack is separated from the main unit creating a thin profile. Reduction dies sold separately.

### INCLUDED ACCESSORIES



Back Limit Switch



Electric Foot Pedal  
PEDAL-ES



Fitting Orientation  
Protractor



Crimp Calculator

**Note:** Higher tonnage versions available upon request. Contact Kuriyama Customer Service for details.

Because we continually examine ways to improve our products, we reserve the right to alter specifications or discontinue products without prior notice.

## KC4-V300 SERIES

### OPTIONAL ACCESSORIES (PGS. 36 – 42)



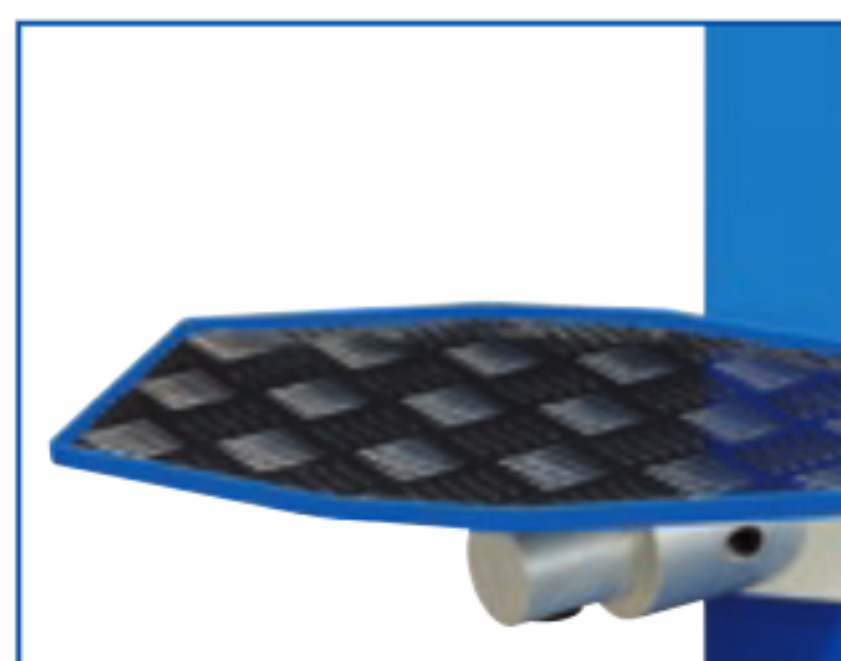
Die Cart (24 pc.)  
DIECART-V119



ES4 Upgrades  
(pgs. 38 & 39)



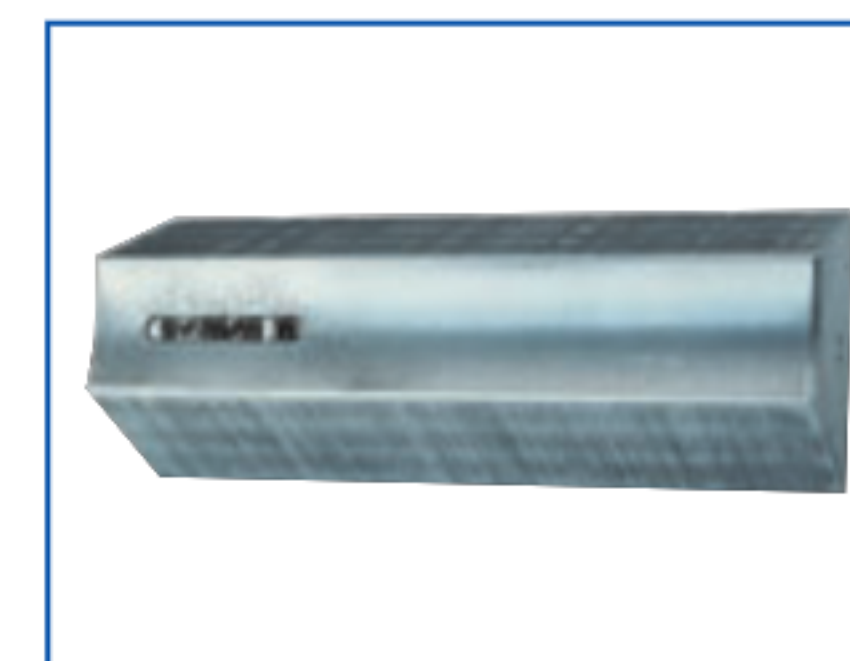
Protection Net with  
Activation Switch



Mounted Side Table  
TABLE-KC



Custom Made Dies



Marking Dies  
(pgs. 21 & 22)

### AVAILABLE DIES

Die Number	Crimp Range (mm)	Closed Diameter (mm)	Length (mm)	Weight (lbs/ea)
KCDV119-6	6.0 - 8.0	6	60	15.4
KCDV119-8	8.0 - 10.0	8	60	15.4
KCDV119-10	10.0 - 12.0	10	60	14.4
KCDV119-12	12.0 - 14.0	12	60	14.4
KCDV119-14	14.0 - 16.0	14	60	15.5
KCDV119-16	16.0 - 19.0	16	60	15.5
KCDV119-19	19.0 - 22.0	19	60	16.6
KCDV119-22	22.0 - 25.0	22	60	16.6
KCDV119-25	25.0 - 29.0	25	60	15.5
KCDV119-29	29.0 - 34.0	29	70	15.5
KCDV119-34	34.0 - 38.0	34	70	15.5
KCDV119-38	38.0 - 42.0	38	85	15.5
KCDV119-42	42.0 - 46.0	42	85	15.5
KCDV119-46	46.0 - 50.0	46	120	19.9
KCDV119-50	50.0 - 54.0	50	120	15.5
KCDV119-54	54.0 - 58.0	54	120	16.6
KCDV119-58	58.0 - 63.0	58	120	16.6
KCDV119-63	63.0 - 69.0	63	120	17.7
KCDV119-69	69.0 - 73.0	69	120	15.5

Die Number	Crimp Range (mm)	Closed Diameter (mm)	Length (mm)	Weight (lbs/ea)
KCDV119-73	73.0 - 77.0	73	120	13.3
KCDV119-77	77.0 - 86.0	77	120	11.1
KCDV119-86	86.0 - 90.0	86	120	12.5
KCDV119-96	96.0 - 103.0	96	120	8.9
KCDV220-103	103.0 - 106.0	103	145	73.5
KCDV220-106	106.0 - 111.0	106	145	73.5
KCDV220-111	111.0 - 116.0	111	145	70.5
KCDV220-116	116.0 - 121.0	116	145	68.3
KCDV220-121	121.0 - 126.0	121	145	66.0
KCDV220-126	126.0 - 131.0	126	145	63.9
KCDV220-131	131.0 - 136.0	131	145	61.7
KCDV220-136	136.0 - 146.0	136	145	58.4
KCDV220-146	146.0 - 156.0	146	145	52.9
KCDV220-156	156.0 - 166.0	156	145	47.3
KCDV220-166	166.0 - 178.0	166	145	41.8
KCDV220-178	178.0 - 190.0	178	145	33.0
KCDV220-190	190.0 - 220.0	190	145	25.3

*Large Diameter Dies available to 350 mm.*

### REDUCTION DIES

Die Number	Reduction Range (mm)	Weight (lbs/ea)
REDUXV1	10.0 - 96.0	155
REDUXV2	103.0 - 190.0	102

Because we continually examine ways to improve our products, we reserve the right to alter specifications or discontinue products without prior notice.