

## KPUSH2 Hydraulic Hose Pusher



Hose Capacity (in)	Pneumatic Input (psi)
<b>2</b>	<b>100</b>
Pusher Size	
L x W x H (in)	25.8 x 40.4 x 50.6
Weight (lbs)	214
Part Number	
KPUSH2	

### DESCRIPTION

Pneumatically fed with a manual cycle and adjustable cylinder stroke pressure.

## KPUSH3 Hydraulic Hose Pusher



Hose Capacity (in)	Pneumatic Input (psi)
<b>3</b>	<b>100</b>
Pusher Size	
L x W x H (in)	33.7 x 37.4 x 49.2
Weight (lbs)	518
Part Number	Motor Info
KPUSH3	230V 1 PH

### INCLUDED ACCESSORIES



Electric Foot Pedal

### DESCRIPTION

Pneumatically fed with a semi-automatic cycle, self-centering vice and adjustable cylinder stroke and vice pressures.

Because we continually examine ways to improve our products, we reserve the right to alter specifications or discontinue products without prior notice.

## KPUSH8 Industrial Hose Pusher

Hose Capacity (in)	Pneumatic Input (psi)
<b>8</b>	<b>8,818</b>
Max Coupling OD (in)	16.7
Pusher Size	
L x W x H (in)	44.3 x 69.7 x 24.6
Weight (lbs)	298
Part Number	Pump Info
KPUSH3	100 PSI

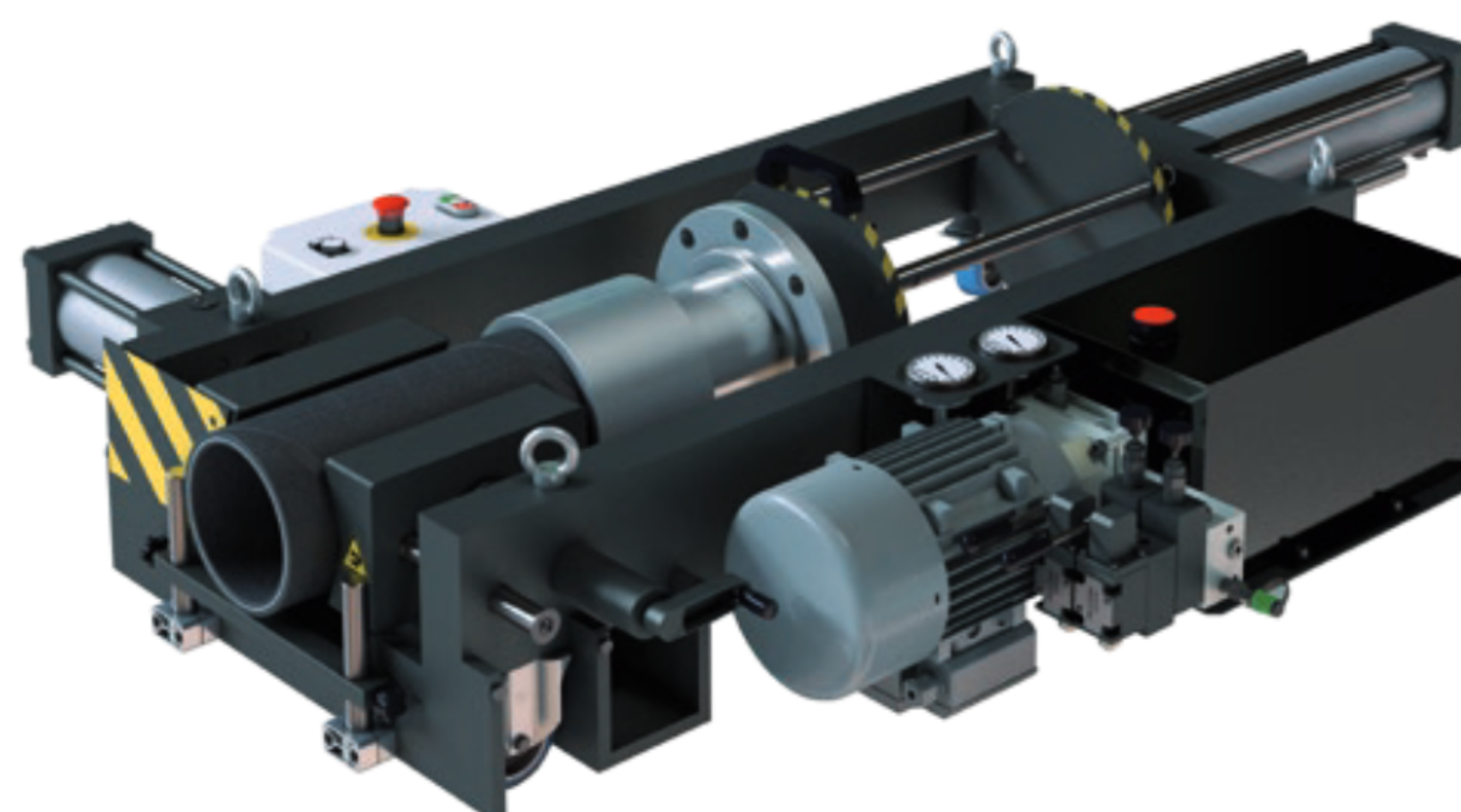


### DESCRIPTION

An extremely powerful unit that is up to almost any task. Powered by a separate air pump, its clamping mechanism holds any size hose firmly in place during insertion.

## KPUSH22-CON Concrete Hose Pusher

Hose Capacity (in)	Pneumatic Input (psi)
<b>8</b>	<b>22,046</b>
Max Coupling OD (in)	16.7
Pusher Size	
L x W x H (in)	49.2 x 71.9 x 13.8
Weight (lbs)	992
Part Number	Motor Info
KPUSH3	3 HP



### DESCRIPTION

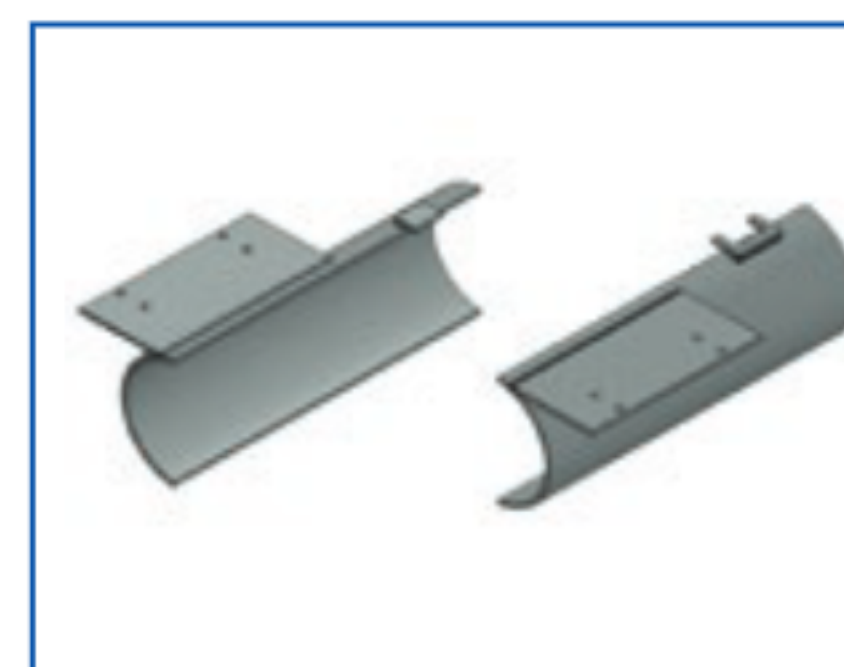
Boasting 22,046 lbs of crimping force, the KPUSH22-CON is designed for difficult, heavy duty industrial hose such as concrete and petroleum hoses.

### OPTIONAL ACCESSORIES



Concrete Hose Mandrels

Part Number	Description	Hose ID (in)
PUSHMAN200	Concrete Hose Mandrel	2
PUSHMAN250	Concrete Hose Mandrel	2 1/2
PUSHMAN300	Concrete Hose Mandrel	3
PUSHMAN400	Concrete Hose Mandrel	4
PUSHMAN500	Concrete Hose Mandrel	5



Non-Slip Hose Jaws

Part Number	Description	Size (in)
PUSHJAWS200	Non-slip Hose Jaws	2
PUSHJAWS250	Non-slip Hose Jaws	2 1/2
PUSHJAWS300	Non-slip Hose Jaws	3
PUSHJAWS400	Non-slip Hose Jaws	4
PUSHJAWS500	Non-slip Hose Jaws	5

Because we continually examine ways to improve our products, we reserve the right to alter specifications or discontinue products without prior notice.