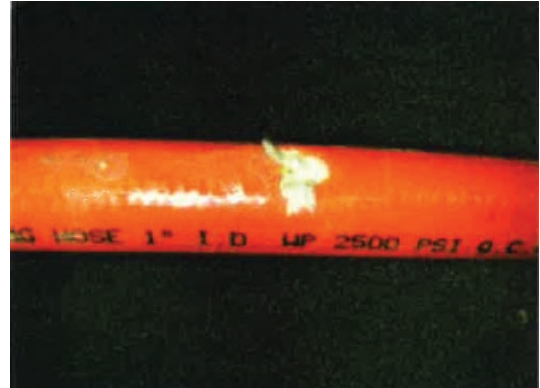


WARNING!

IF YOU SEE "IT" – STOP "IT": FAILURE TO PROPERLY REPAIR OR REPLACE HOSE AFTER EXPOSING WHITE BRAID REINFORCEMENT LAYER CAN CAUSE DEATH, PERSONAL INJURY AND PROPERTY DAMAGE.

Like strands in a bridge cable, each reinforcement fiber plays an exact role in the ultimate burst strength of the hose. A **minor** slice or nick in the reinforcement can result in total hose failure.

The age of the hose **does not matter!** It is unfortunate, but even a hose used (1) time can be damaged in severe applications. These hoses must be immediately removed from service.



DANGER
READ AND UNDERSTAND
THE FOLLOWING:

Warning: This product can expose you to chemicals, including lead or titanium dioxide, which is known to the State of California to cause cancer and birth defects or other reproductive harm. For more information, go to www.P65warnings.ca.gov.

HOSE BASICS

1. NEVER EXCEED THE MAXIMUM WORKING **PRESSURE**.
2. NEVER EXCEED THE MAXIMUM WORKING **TEMPERATURE**.
3. NEVER APPLY PRESSURE TO A **DAMAGED** HOSE.
4. HIGH PRESSURE HOSES ARE DESIGNED TO USE SPECIFIC **FITTINGS** AND **TOOLING**. NEVER USE A DIFFERENT **BRAND** OF FITTINGS OR TOOLING. FAILURE TO DO SO CAN CAUSE DEATH, PERSONAL INJURY AND/OR PROPERTY DAMAGE.
5. A **KINKED**, **CRUSHED**, OR **BLISTERED** HOSE WILL EVENTUALLY FAIL – DO NOT RISK INJURY. IMMEDIATELY REPAIR OR REMOVE HOSE FROM SERVICE.
6. FOLLOW THE PUMP/EQUIPMENT MANUFACTURER'S **INSTRUCTIONS** FOR PRESSURIZED HOSE TESTING.