

## CARBON STEEL TWO-PIECE FITTINGS FERRULES – FOR USE WITH A SERIES FITTINGS

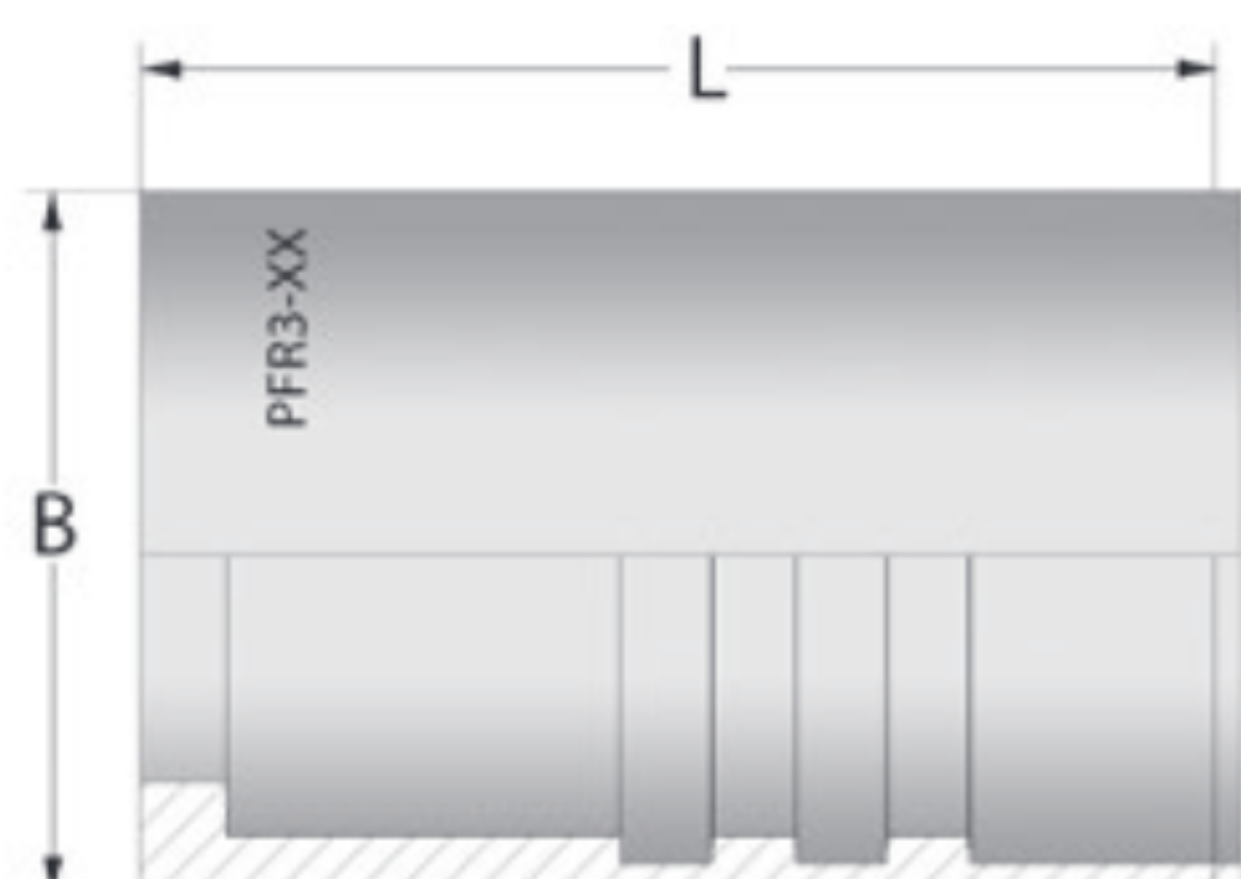
### Piranhaflex™ Ferrules

[View Up To Date Info](#)

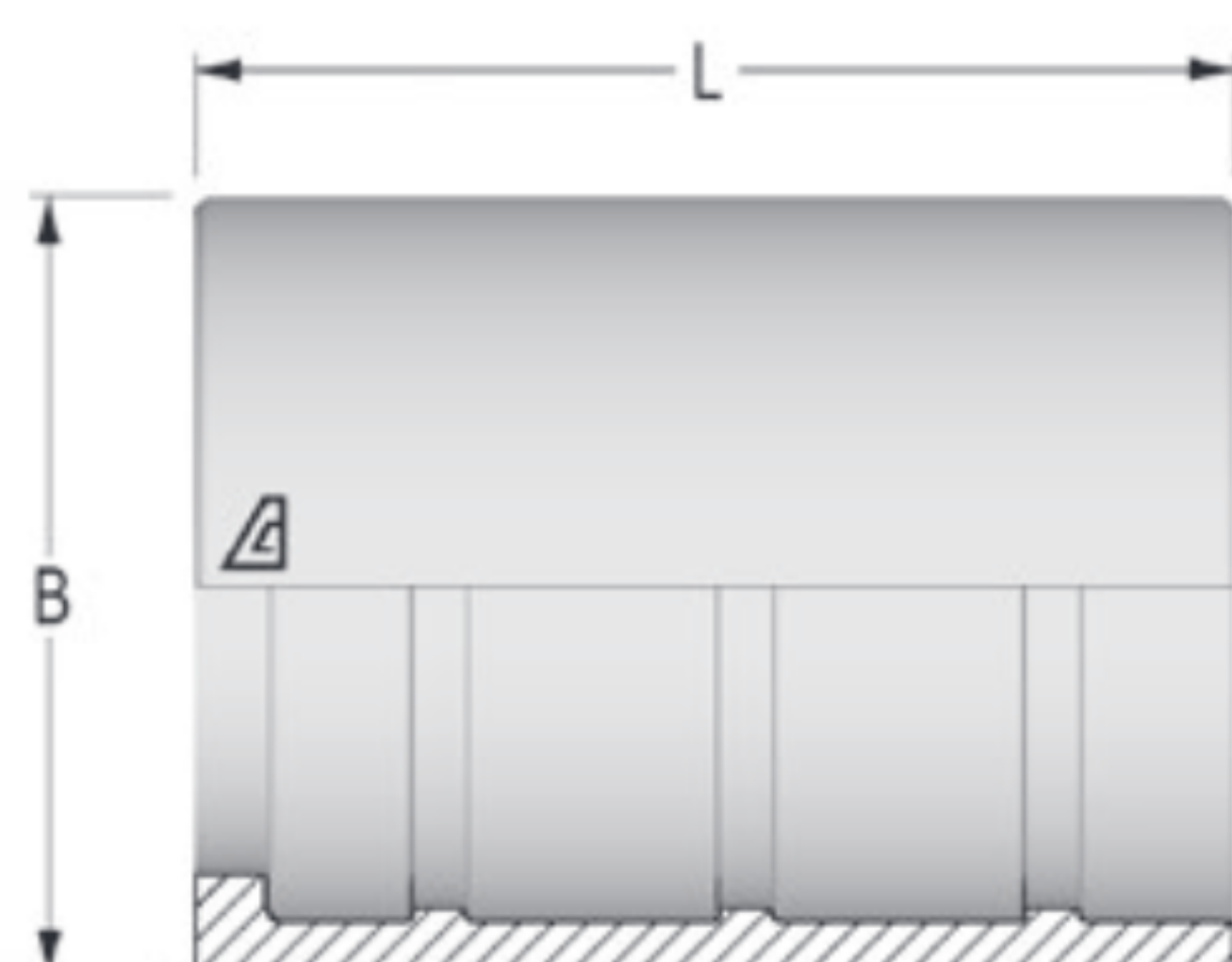


← SCAN OR VISIT  
[KOA.link/  
PF-Ferrules](http://KOA.link/PF-Ferrules)

### PFR3 Series

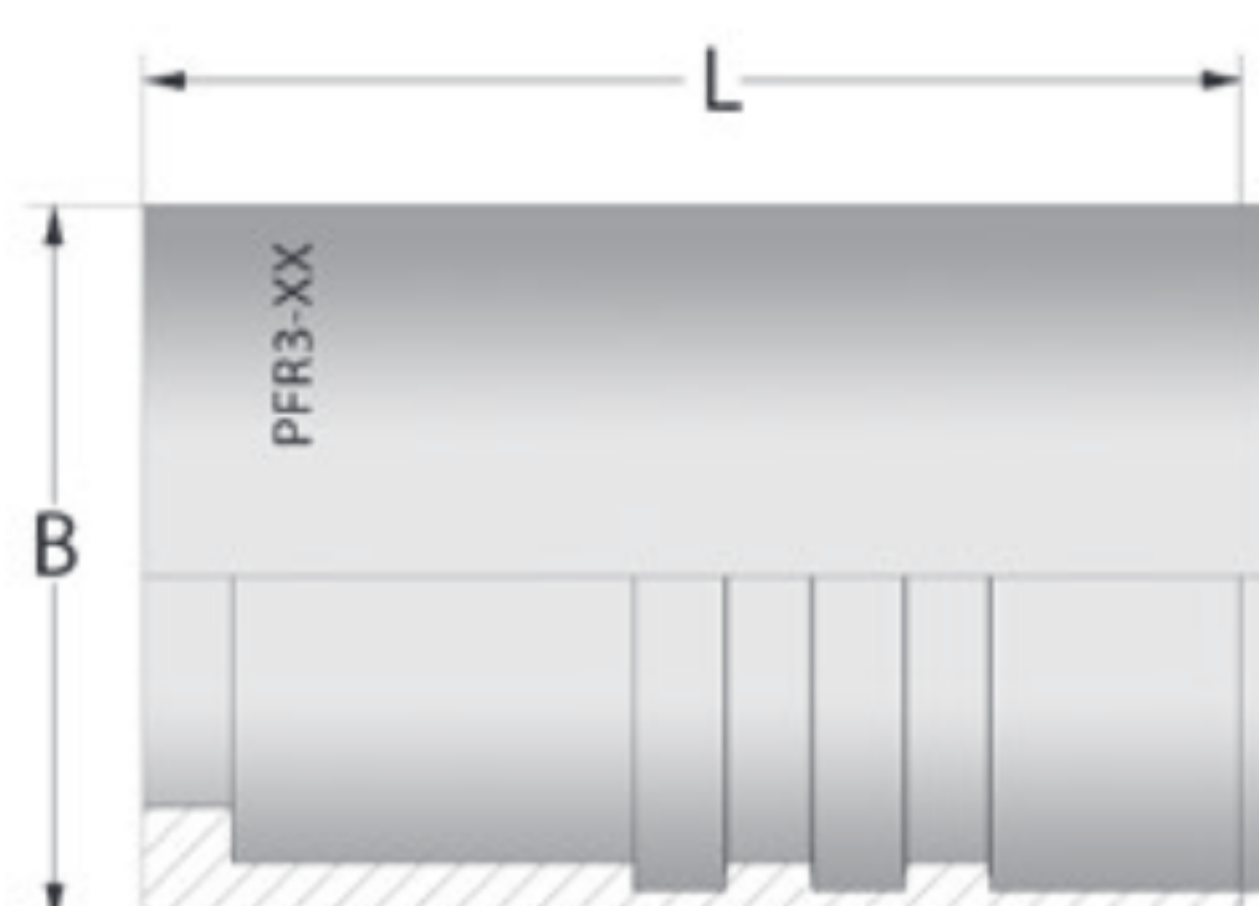


Part Number	Dash Size	Hose ID Size		B OD (mm)	L Length (mm)	Weight Each (lbs)
		(in)	(mm)			
PFR3-04	04	1/4	6.4	14.8	28.9	0.03
PFR3-05	05	5/16	7.9	17.4	28.8	0.04
PFR3-06	06	3/8	9.5	19.0	28.8	0.04
PFR3-08	08	1/2	12.7	23.7	36.3	0.06



### AFX Series

Part Number	Dash Size	Hose ID Size		B OD (mm)	L Length (mm)	Weight Each (lbs)
		(in)	(mm)			
AFX-03	03	3/16	4.8	21	21.5	0.05
AFX-04	04	1/4	6.4	23	24.7	0.07
AFX-05	05	5/16	7.9	25	24.7	0.08
AFX-06	06	3/8	9.5	27	29.7	0.10
AFX-08	08	1/2	12.7	30	30.5	0.11
AFX-10	10	5/8	15.9	34	35.5	0.15
AFX-12	12	3/4	19.0	38	36.0	0.17
AFX-16	16	1	25.4	48	42.5	0.28



### PFR / PFR7 Series

Universal Ferrules for SAE 100R7, 100R8, 100R18 & ANSI 92.2 Hoses (Steel)

Part Number	Dash Size	Hose ID Size		B OD (mm)	L Length (mm)	Weight Each (lbs)
		(in)	(mm)			
PFR-03	03	3/16	4.7	14.9	24.0	0.03
PFR-04	04	1/4	6.4	17.0	29.0	0.04
PFR7-05*	05	5/16	7.9	19.0	29.0	0.04
PFR-06	06	3/8	9.5	19.0	31.0	0.05
PFR-08	08	1/2	12.7	25.4	36.0	0.06
PFR-12	12	3/4	19.1	31.8	45.2	0.11

\* PFR7-05 ferrules are to be used only with SAE 100R7 hoses!

Kuriyama stocks a variety of fittings designed for use with all of our Piranhaflex™ SAE 100R7, 100R8, 100R18 and ANSI 92.2 hoses. For more information contact your nearest Kuriyama warehouse location. Please refer to our latest Kuriyama Hydraulic Connections Catalog for a complete list of available two-piece fittings.

Because we continually examine ways to improve our products, we reserve the right to alter specifications or discontinue products without prior notice.