



## P400 Portable Service Crimper

ONLY  
**47** lbs

Hose Capacity (in)		Crimping Force (ton)
2 Wire	1	<b>35</b>
4 SP	3/4	
90° Fittings	1	
Industrial	1	

Crimper Size	
L x W x H (in)	12 1/2 x 12 1/2 x 24
Weight (lbs)	47

Part Number	Power Input
P400	Hand, Air or Electric Pump

Die Series	Die Range (mm)
P402	12-22.2

View Up To Date Info



◀ SCAN OR VISIT  
[KOA.link/  
P400](https://KOA.link/P400)

### DESCRIPTION

The P400 Portable crimper is light weight and can be carried to almost any location where service is required. It can be paired with either a Hand Pump, Pneumatic Pump or Electric Pump.

### ENGINEERED TO ACCOMMODATE YOUR NEEDS

- 35 Tons of crimping force
- Hose capacity up to 1" 2 wire and 3/4" 4 SP
- Available ValPower® Hand Pump, Pneumatic Pump 10,000 psi or Electric Pump
- Removable Pusher and 2 piece PF402 rubber caged die set make accurate fitting positioning easy
- PF402 rubber caged dies sets for heavy duty environments
- Color-coded die rubber cages for easy identification
- Base mounting holes allow the crimper to be bench or truck bed mounted if required

### INCLUDED ACCESSORIES



Die Removal Magnet  
P/N: 104679



CRIMPX Die Lubricant:  
Oil 4 oz bottle with  
dauber cap  
P/N: 103886

### OPTIONAL ACCESSORIES



T420 Micrometer  
P/N: 103085



Hand Pump  
P/N: VHP-10-43



Pneumatic Pump  
P/N: VAP-10-100



Electric Pump  
P/N: VEP1001



CRIMPX Die Lubricant  
Grease 4 oz with  
brush  
P/N: 104162



Die Storage Shelf  
P/N: 101431

For the latest Piranhaflex crimp specifications, visit [KOA.link/PF-Crimp-Specs](https://KOA.link/PF-Crimp-Specs)

Because we continually examine ways to improve our products, we reserve the right to alter specifications or discontinue products without prior notice.

# P400

## Portable Service Crimper



- 1 Quick Disconnect
- 2 Powerful 35 Ton Hydraulic Cylinder
- 3 Removable Pusher
- 4 T400 Main Pusher Plate
- 5 T400 Spacer Ring #2
- 6 T400 Rubber Cage Die Series
- 7 Adapter Bowl 420 to 400 Bowl
- 8 Mounted on a convenient carrying frame
- 9 Crimper position can be adjusted

12 1/2" *Small footprint for minimum use of space*

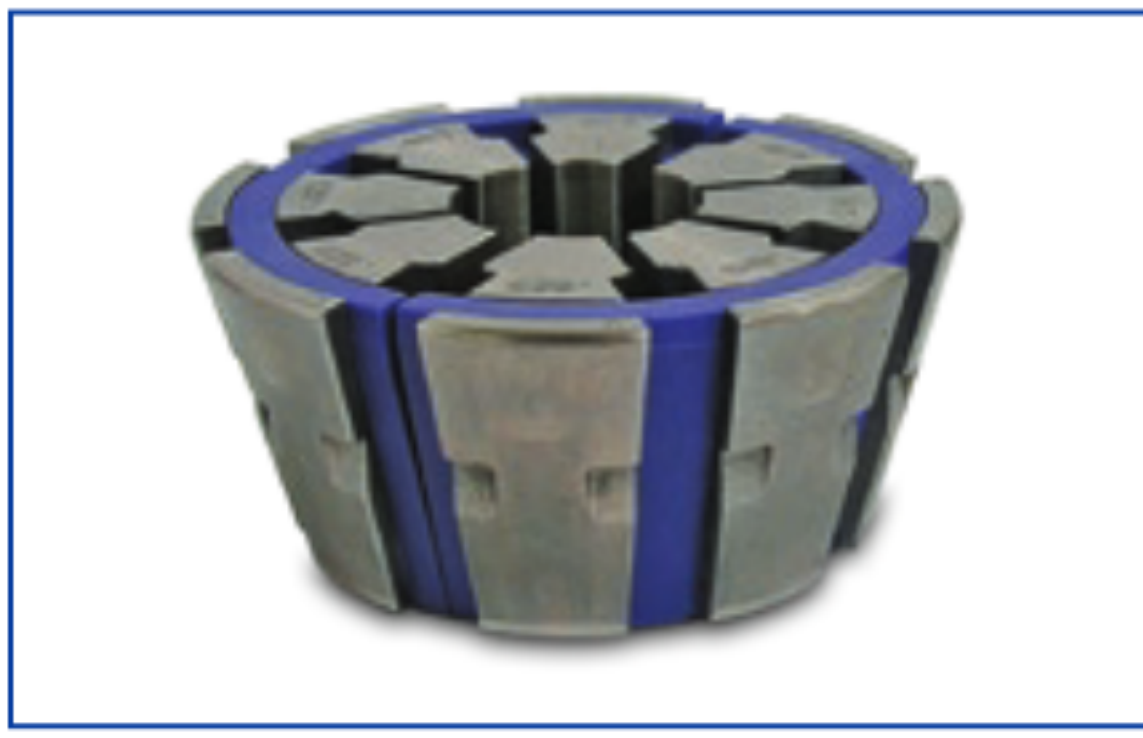
### DURABLE, RELIABLE DESIGN = PROFITABILITY

- Crimper position can be adjusted for optimum crimping position or dropped to vertical position for better balance when the crimper is being carried.
- Open design to provide excellent operator visibility.
- Complete range of dies and accessories available.

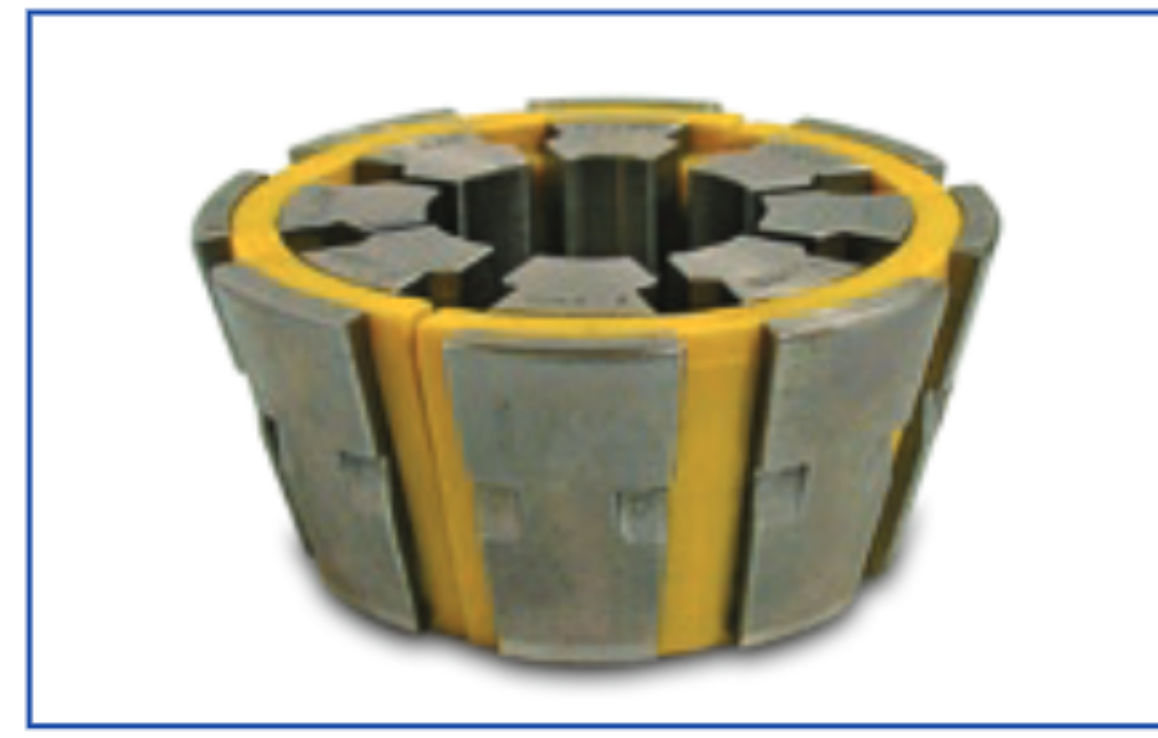
Because we continually examine ways to improve our products, we reserve the right to alter specifications or discontinue products without prior notice.

## P402 Dies and Tooling

The following P402 Series dies are designed to work with the P400 crimper.



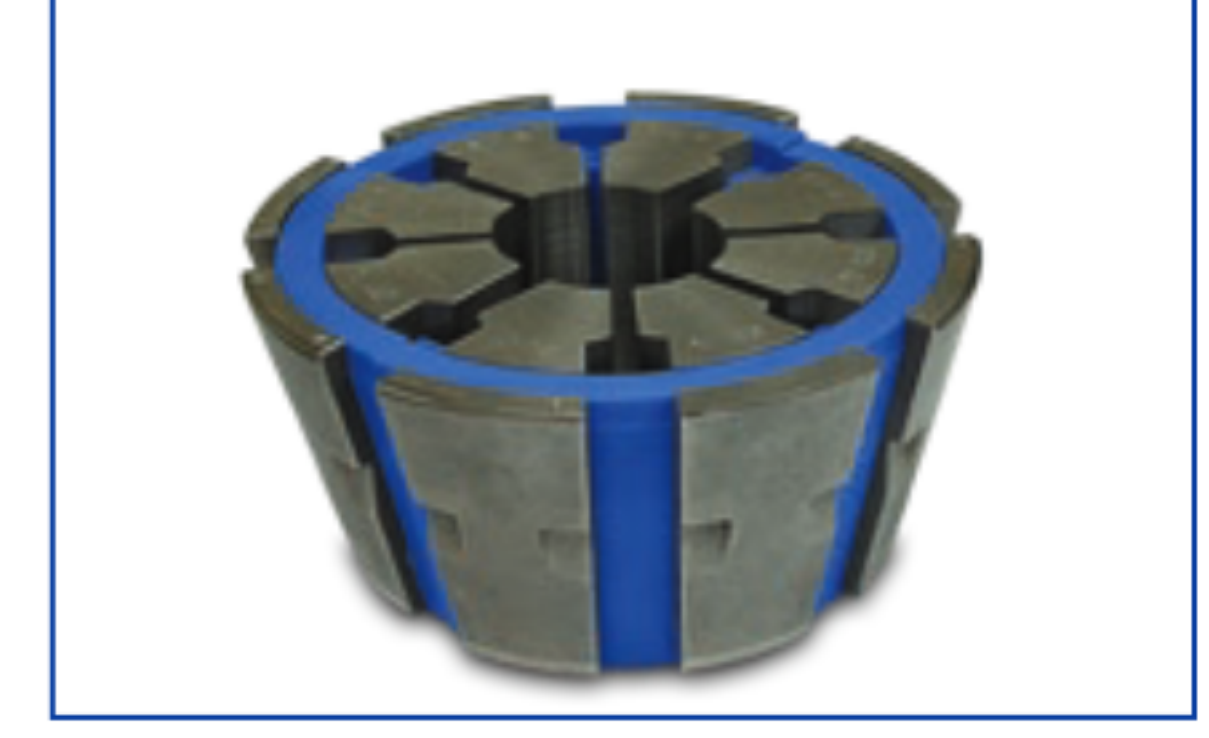
T400 12mm Die Set  
P/N: PF402-12D



T400 14.2mm Die Set  
P/N: PF402-14.2D



T400 17.4mm Die Set  
P/N: PF402-17.4D



T400 22.2mm Die Set  
P/N: PF402-22.2D



Adapter Bowl 420 to 400 Bowl  
P/N: PF420/400-AB



T400 Main Pusher Plate  
W/ Magnets  
P/N: PF400-MPP



T400 Spacer Ring #1  
P/N: PF402-1-SR



T400 Spacer Ring #2  
P/N: PF402-2-SR

In addition, the P402 dies are designed to work with the T400 series of crimpers shown below:



### LIGHT WEIGHT PORTABLE UNIT:

Truly "portable" crimper can be carried to almost any location where services is required.



### ENGINEERED TO ACCOMMODATE YOUR NEEDS

- 2 piece PF402 rubber caged die set make accurate fitting positioning easy.
- PF402 rubber caged dies sets for heavy duty environments.
- Color-coded die rubber cages for easy identification.



Because we continually examine ways to improve our products, we reserve the right to alter specifications or discontinue products without prior notice.