



## SCF-SS Series (304 Stainless Steel) Sanitary Crimp Ferrules

### FEATURES AND ADVANTAGES

- Smooth 64RA surface finish.
- Designed for use with TCS-SS, FBS-SS, MBS-SS, FILS-SS, MILS-SS and TES-SS series fittings.

**VIEW ONLINE**



SCAN FOR INFO  
or visit

[KOA.link/SCF-SS](http://KOA.link/SCF-SS)

Part Number	Hose ID		Ferrule ID		Wall Thickness		Length		Weight Each (lbs)	Standard Carton
	(in)	(in)	(mm)	(in)	(mm)	(in)	(mm)			
SCF-SS10138	1	1.38	35.0	0.108	2.7	2.28	57.9	0.28	126	
SCF-SS10146	1	1.46	37.1	0.108	2.7	2.28	57.9	0.29	126	
SCF-SS10153	1	1.53	38.9	0.108	2.7	2.28	57.9	0.31	144	
SCF-SS10157	1	1.57	39.9	0.108	2.7	2.28	57.9	0.33	144	
SCF-SS10161	1	1.61	40.9	0.108	2.7	2.28	57.9	0.35	144	
SCF-SS10165	1	1.65	41.9	0.108	2.7	2.28	57.9	0.36	144	
SCF-SS10173	1	1.73	43.9	0.108	2.7	2.28	57.9	0.37	96	
SCF-SS15201	1 1/2	2.01	51.1	0.118	3.0	2.36	60.0	0.46	105	
SCF-SS15206	1 1/2	2.06	52.3	0.118	3.0	2.36	60.0	0.49	90	
SCF-SS15210	1 1/2	2.10	53.3	0.118	3.0	2.36	60.0	0.49	90	
SCF-SS15215	1 1/2	2.15	54.6	0.118	3.0	2.36	60.0	0.51	72	
SCF-SS15220	1 1/2	2.20	55.9	0.118	3.0	2.36	60.0	0.53	72	
SCF-SS15228	1 1/2	2.28	57.9	0.118	3.0	2.36	60.0	0.55	72	
SCF-SS15236	1 1/2	2.36	59.9	0.118	3.0	2.36	60.0	0.60	72	
SCF-SS20248	2	2.48	63.0	0.128	3.3	2.80	71.1	0.68	60	
SCF-SS20256	2	2.56	65.0	0.128	3.3	2.80	71.1	0.68	60	
SCF-SS20264	2	2.64	67.1	0.128	3.3	2.80	71.1	0.73	60	
SCF-SS20268	2	2.68	68.1	0.128	3.3	2.80	71.1	0.75	60	
SCF-SS20273	2	2.73	69.3	0.128	3.3	2.80	71.1	0.77	45	
SCF-SS20279	2	2.79	70.1	0.128	3.3	2.80	71.1	0.80	45	
SCF-SS20287	2	2.87	72.9	0.128	3.3	2.80	71.1	0.84	45	
SCF-SS20295	2	2.95	74.9	0.128	3.3	2.80	71.1	0.88	36	
SCF-SS25300	2 1/2	3.00	76.2	0.138	3.5	3.25	82.6	0.95	12	
SCF-SS25307	2 1/2	3.07	78.0	0.138	3.5	3.25	82.6	0.98	12	
SCF-SS25315	2 1/2	3.15	80.0	0.138	3.5	3.25	82.6	1.02	12	
SCF-SS25323	2 1/2	3.23	82.0	0.138	3.5	3.25	82.6	1.06	12	
SCF-SS25331	2 1/2	3.31	84.1	0.138	3.5	3.25	82.6	1.10	12	
SCF-SS25339	2 1/2	3.39	86.1	0.138	3.5	3.25	82.6	1.14	12	
SCF-SS25346	2 1/2	3.46	87.9	0.138	3.5	3.25	82.6	1.18	12	
SCF-SS30354	3	3.54	89.9	0.138	3.5	3.94	100.1	1.23	24	
SCF-SS30360	3	3.60	91.4	0.138	3.5	3.94	100.1	1.30	24	

(CONTINUED)

Because we continually examine ways to improve our products, we reserve the right to alter specifications or discontinue products without prior notice.



## SCF-SS Series (304 Stainless Steel) Sanitary Crimp Ferrules

### FEATURES AND ADVANTAGES

- Smooth 64RA surface finish.
- Designed for use with TCS-SS, FBS-SS, MBS-SS, FILS-SS, MILS-SS and TES-SS series fittings.

**VIEW ONLINE**



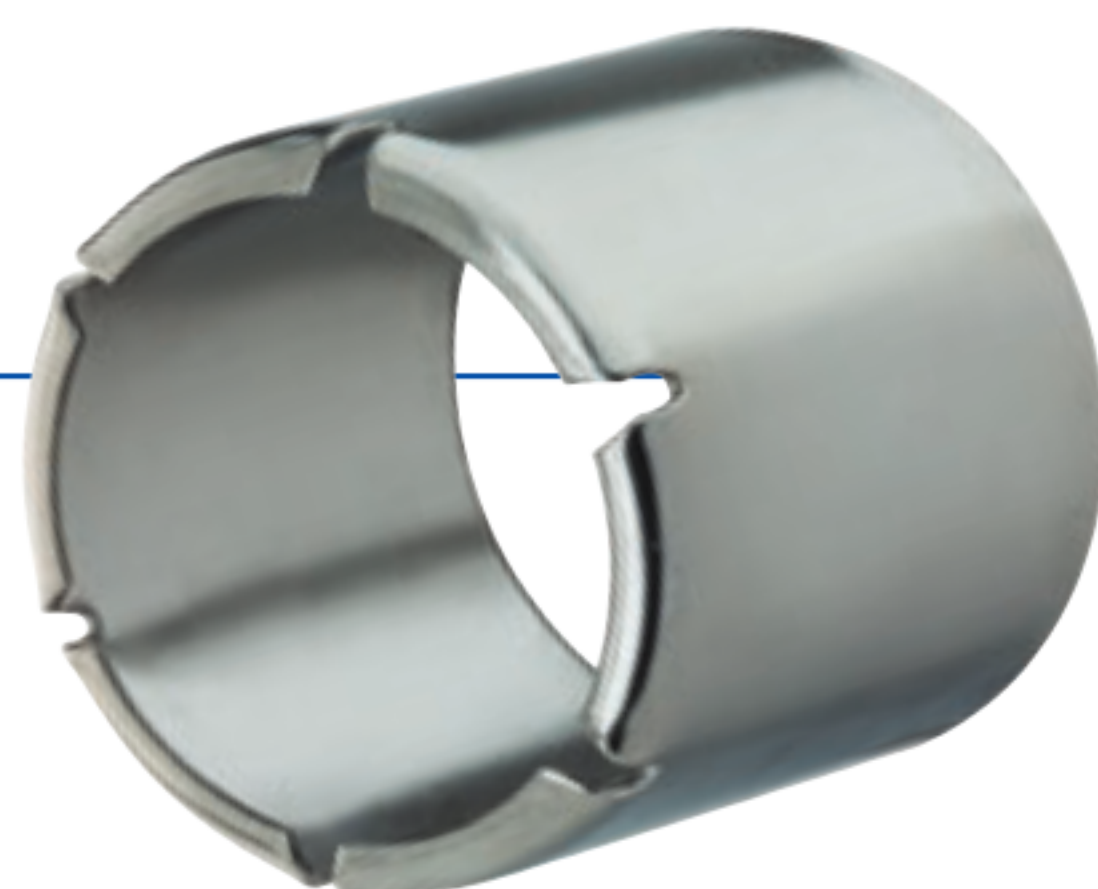
SCAN FOR INFO

or visit

[KOA.link/SCF-SS](http://KOA.link/SCF-SS)

(CONTINUED FROM PG. 125)

Part Number	Hose ID		Ferrule ID		Wall Thickness		Length		Weight Each (lbs)	Standard Carton
	(in)	(in)	(mm)	(in)	(mm)	(in)	(mm)			
SCF-SS30368	3	3.68	93.5	0.138	3.5	3.94	100.1	1.43	12	
SCF-SS30374	3	3.74	95.0	0.138	3.5	3.94	100.1	1.54	12	
SCF-SS30382	3	3.82	97.0	0.138	3.5	3.94	100.1	1.70	12	
SCF-SS30390	3	3.90	99.1	0.138	3.5	3.94	100.1	1.81	12	
SCF-SS30398	3	3.98	101.1	0.138	3.5	3.94	100.1	1.96	12	
SCF-SS30409	3	4.09	103.9	0.138	3.5	3.94	100.1	2.07	12	
SCF-SS40457	4	4.57	116.1	0.158	4.0	4.19	106.4	2.20	12	
SCF-SS40465	4	4.65	118.1	0.158	4.0	4.19	106.4	2.36	12	
SCF-SS40472	4	4.72	119.9	0.158	4.0	4.19	106.4	2.51	12	
SCF-SS40480	4	4.80	121.9	0.158	4.0	4.19	106.4	2.71	12	
SCF-SS40488	4	4.88	124.0	0.158	4.0	4.19	106.4	2.91	12	
SCF-SS40496	4	4.96	126.0	0.158	4.0	4.19	106.4	3.09	8	
SCF-SS40508	4	5.08	129.0	0.158	4.0	4.19	106.4	3.26	8	
SCF-SS40520	4	5.20	132.1	0.158	4.0	4.19	106.4	3.46	8	
SCF-SS40531	4	5.31	134.9	0.158	4.0	4.19	106.4	3.64	8	



## CRF-SS Series (304 Stainless Steel) KuriCrimp™ Crimp Ferrules

### FEATURES AND ADVANTAGES

- Designed for use with TCS-SS, FBS-SS, MBS-SS, FILS-SS, MILS-SS and TES-SS series fittings.

Part Number	Hose ID		Ferrule ID		Wall Thickness		Length		Weight Each (lbs)	Standard Carton
	(in)	(in)	(mm)	(in)	(mm)	(in)	(mm)			
CRF-SS10108	1	1.50	38.1	0.059	1.5	2.29	58.2	0.20	200	
CRF-SS10109	1	1.56	39.6	0.059	1.5	2.29	58.2	0.21	200	
CRF-SS10110	1	1.63	41.4	0.059	1.5	2.29	58.2	0.21	200	
CRF-SS10111	1	1.69	42.9	0.059	1.5	2.29	58.2	0.23	200	

(CONTINUED)

Because we continually examine ways to improve our products, we reserve the right to alter specifications or discontinue products without prior notice.